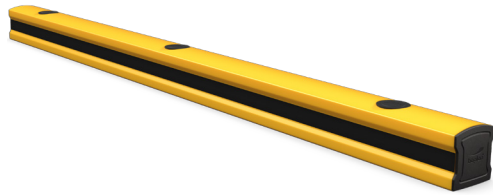


FLIP120L

KICK RAILS AND WHEEL STOPS

Revision: 11 February 2025 9:02 AM
Boplan reference: PL1210...







PRODUCT SPECIFICATIONS

APPLICATION	
Environment	<ul style="list-style-type: none"> Ground level protection Wall protection (refrigerator walls, decorative walls, sandwich panels) Wheel guide for pallet trucks or trolleys in busy traffic lanes Protection of machines and infrastructure Below a Boplan traffic barrier system Indoor and outdoor use Food Industry
MATERIAL	
Plinth	Extrilene® - UV resistant - Fire class E* - Non conductive - Impervious to most chemicals**
Endcap	Sustainable elastomer
STANDARD COLOURS	
Plinth	Yellow/Black - Black/Yellow (Yellow RAL 1003 & Black RAL 9005)




*Classification according to EN 13501-1:2007 +A1:2009 - Fire classification of construction products and building elements.

**Ask your local sales office for resistance to specific chemicals.

		FIXATIONS	
		ZC (Zinc coated)	SS (Stainless steel)
STANDARD	Concrete screw	 Ø12mm x 100mm	Not available
	Anchor rod (Chemical)	 M12 x 120mm + Chemical resin	M12 x 120mm + Chemical resin
	Wedge Anchor	 M12 x 120mm	Not available
	Asphalt anchor	 Bolt M10 x 40mm + Screw Ø16mm	Not available



FEATURES AND FUNCTIONALITY - FLIP120L

boplan IMPACT LABEL FOR SAFETY BARRIERS		
BOPLAN FLIP120L		
IMPACT RATING	45°	90°
E50 < 50 kJ		
E40 < 40 kJ		
E30 < 30 kJ		
E25 < 25 kJ		
E20 < 20 kJ		
E15 < 15 kJ		
E12 < 12 kJ		
E10 < 10 kJ		
E7 < 7.5 kJ		
E5 < 5.0 kJ	5.3 kJ	4.2 kJ
E2 < 2.5 kJ		
E1 < 1.0 kJ		
IMPACT RESULTS Deflection: At maximum impact energy  D= 129 mm / 7.5 inch		SUCCESS CRITERIA VEHICLE STOPPED ASI (ACCELERATION SEVERITY INDEX) <0.5
TEST CONDITIONS TEMPERATURE: 20°C / 68°F IMPACT HEIGHT: 88 mm / 3.46 Inch → D: 129 mm / 7.5 Inch TEST FLOOR: CONCRETE SLAB C25/30 - 150 mm / 6 Inch		BOPLAN TEST CENTRE Muizelstraat 12 8560 Moorsele Belgium 
TEST VEHICLE: TYPE: BOPLAN IMPACT TEST VEHICLE WEIGHT: 3775 Kg / 8322.45 lbs SIZE (L x W x h): 3100 x 1100 x 1150 mm / 122 x 43 1/4 x 45 1/4 Inch CONTACT AREA, STEEL BUMPER WIDTH: 1000 mm / 39 1/4 Inch		IL-PL121-20240711

SIZE

Height	4 3/4 in
Profile section (in)	4 3/4 (h) x 4 3/4 (w) x 2/5 (thick)
Standard rail length	24 / 36 / 48 / 60 / 72 in

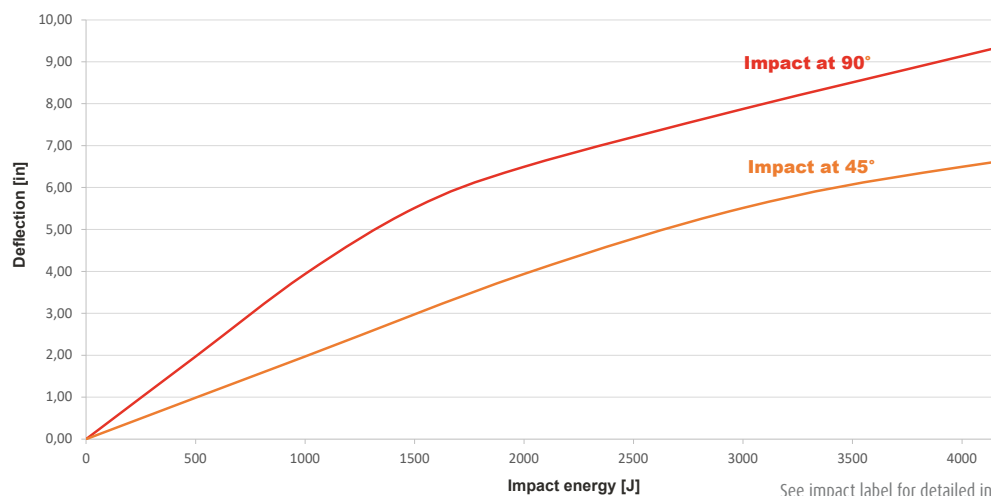
REQUIREMENTS

Concrete quality	minimum 4000PSI (C25/30)
Concrete floor plate thickness	minimum 6 in
Operational temperature	14°F up to 104°F
Water and humidity	Zinc coated fixations: indoor and outdoor use in most environments

REFERENCE LIST - FLIP120L

	YELLOW/Black	BLACK/Yellow
24 in (2fix)	PL1210-0610-0001YB	PL1210-0610-0001BY
36 in (2fix)	PL1210-0915-0001YB	PL1210-0915-0001BY
48 in (3fix)	PL1210-1220-0001YB	PL1210-1220-0001BY
60 in (3fix)	PL1210-1525-0001YB	PL1210-1525-0001BY
72 in (3fix)	PL1210-1828-0001YB	PL1210-1828-0001BY
78 in (3fix)	PL1210-1980-0001YB	PL1210-1980-0001BY
120 in (4fix)	PL1210-3048-0001YB	PL1210-3048-0001BY

Deflection curve



See impact label for detailed information on the test conditions.

SPECSHEET >>> 65

Boplan USA INC | 4350 W White Road, Suite 300, Flowery Branch, GA | +1 678 890 5906 | sales@boplan.us | www.boplan.com

DISCLAIMER: ALL PRODUCT SPECIFICATIONS AND DATA ARE SUBJECT TO CHANGE WITHOUT NOTICE TO IMPROVE RELIABILITY, FUNCTION OR DESIGN OR OTHERWISE.
 © Boplan, the Boplan logo, Flex Impact, Extrilene, Ice Flex, Teddy Pro and RackBull are trademarks of Boplan bv. All other trademarks are property of their respective owners.

TECHNICAL DRAWING - FLIP120L

