

# BO125L EV

## BOLLARDS AND HEIGHT RESTRICTORS

Revision: 4 June 2024 10:55 AM  
Boplan reference: BO125L0-...




### PRODUCT SPECIFICATIONS

APPLICATION	
Environment	The BO125L EV helps prevent accidents, minimizes damage, and maintains safe accessibility to electric mobility. With their visibility and impact-resistant flexibility, EV-bollards are the most effective solution for the protection of charging stations against potential vehicle impacts.
Impact performance	500 Joule (Eq. to 2,0 ton - 2,5 km/h)
OPTIONAL	
Stripes	Coloured reflective stripes providing a high level of visibility.
MATERIAL	
Tube & Cover	Extrilene® - UV resistant - Fire class E <sup>®</sup> - Non conductive - Impervious to most chemicals <sup>**</sup>
Cap	Sustainable elastomer
STANDARD COLOURS	
Bollard	Standard: Black RAL 9005 Also available in Yellow RAL 1003 and White RAL 9003 (Multicolour)
Cover	Standard: Black RAL 9005
BASEPLATES	
	Zinc Coated Steel
Material	Steel 37
Coating	Electroplated + Laquered
Colour	Mat black

<sup>®</sup>Classification according to EN 13501-1:2007 +A1:2009 - Fire classification of construction products and building elements.

<sup>\*\*</sup>Ask your local sales office for resistance to specific chemicals.


		FIXATIONS	
		ZC (Zinc coated)	SS (Stainless steel)
STANDARD	Anchor rod (Chemical)	 M12 x 120mm + Chemical resin	M12 x 120mm + Chemical resin





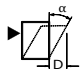

## FEATURES AND FUNCTIONALITY - B0125L EV

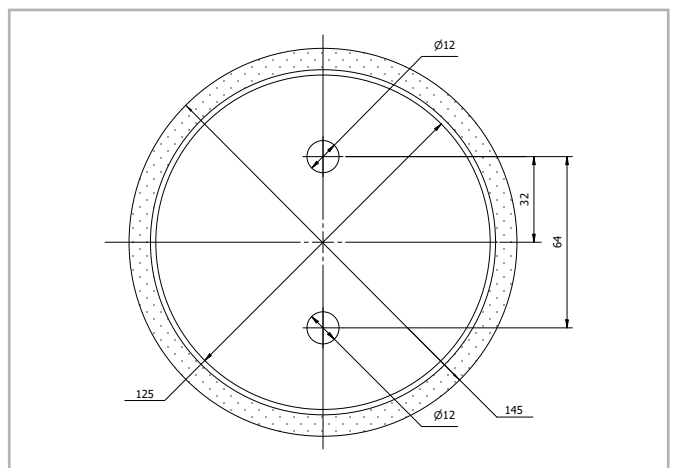
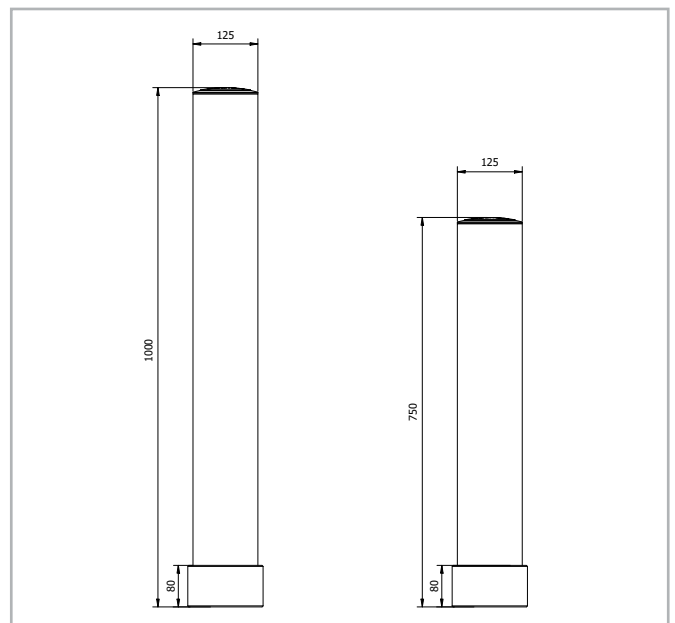
SIZE	
Height	750 mm 1000 mm
Profile section post	Ø125 mm (10 mm thick)
Baseplate	Ø125 mm (8 mm thick)
Base Cover	Diameter: Ø145 mm Height: 80 mm

REQUIREMENTS	
Concrete quality	minimum C25/30
Concrete floor plate thickness (mm)	minimum 150 mm
Concrete slab dimension around posts (mm)	400 (h) x 400 (w) x 300 (d)
Operational temperature	-10°C up to +40°C
Water and humidity	<b>Zinc coated:</b> Indoor and outdoor use in most environments.



### IMPACT LABEL FOR SAFETY BARRIERS

<b>BOPLAN B0125L EV</b>																									
<b>IMPACT RATING</b>																									
<table border="0" style="width: 100%;"> <tr><td style="width: 15px;">E11</td><td style="width: 100px;">&lt; 11 kJ</td></tr> <tr><td>E10</td><td>&lt; 10 kJ</td></tr> <tr><td>E9</td><td>&lt; 9.0 kJ</td></tr> <tr><td>E8</td><td>&lt; 8.0 kJ</td></tr> <tr><td>E7</td><td>&lt; 7.0 kJ</td></tr> <tr><td>E6</td><td>&lt; 6.0 kJ</td></tr> <tr><td>E5</td><td>&lt; 5.0 kJ</td></tr> <tr><td>E4</td><td>&lt; 4.0 kJ</td></tr> <tr><td>E3</td><td>&lt; 3.0 kJ</td></tr> <tr><td>E2</td><td>&lt; 2.0 kJ</td></tr> <tr><td>E1</td><td>&lt; 1.0 kJ</td></tr> <tr><td>E0.5</td><td>&lt; 0.5 kJ</td></tr> </table>	E11	< 11 kJ	E10	< 10 kJ	E9	< 9.0 kJ	E8	< 8.0 kJ	E7	< 7.0 kJ	E6	< 6.0 kJ	E5	< 5.0 kJ	E4	< 4.0 kJ	E3	< 3.0 kJ	E2	< 2.0 kJ	E1	< 1.0 kJ	E0.5	< 0.5 kJ	
E11	< 11 kJ																								
E10	< 10 kJ																								
E9	< 9.0 kJ																								
E8	< 8.0 kJ																								
E7	< 7.0 kJ																								
E6	< 6.0 kJ																								
E5	< 5.0 kJ																								
E4	< 4.0 kJ																								
E3	< 3.0 kJ																								
E2	< 2.0 kJ																								
E1	< 1.0 kJ																								
E0.5	< 0.5 kJ																								
<b>IMPACT RESULTS</b> Deflection: At maximum impact energy	 $\alpha = 15.7^\circ$ $D = 213 \text{ mm} / 8 \text{ 3/8 inch}$																								
<b>TEST CONDITIONS</b> TEMPERATURE: 20°C / 68°F IMPACT HEIGHT: 450 mm / 17 5/8 Inch → D: 213 mm / 8 3/8 Inch → $\alpha: 15.7^\circ$ TEST FLOOR: CONCRETE SLAB C25/30 - 150 mm / 6 Inch	<b>BOPLAN TEST LAB</b> Muizelstraat 12 8560 Moorsele Belgium 																								
<b>TEST VEHICLE:</b> TYPE: BOPLAN IMPACT TEST VEHICLE WEIGHT: 3775 Kg / 8322.45 lbs SIZE (L x W x h): 3100 x 1100 x 1150 mm / 122 x 43 1/4 x 45 1/4 Inch CONTACT AREA, STEEL BUMPER WIDTH: 1000 mm / 39 1/4 Inch	<b>IL-B0125LEV-20240131</b>																								



**REFERENCE LIST - B0125L EV**

	ZINC COATED (ZC) Non - countersunk	
	BLACK	MULTICOLOUR <input type="checkbox"/> <input checked="" type="checkbox"/>
1000 mm	B0125L0-1000-01EVBL	B0125L0-1000-01EVMC
750 mm	B0125L0-0750-01EVBL	B0125L0-0750-01EVMC

STRIPES			
	Black	White	Yellow
1 STRIPE	PA0300-0125-0001BL	PA0300-0125-0001WH	PA0300-0125-0001YE
			