

FLIP120L M

KICK RAILS AND WHEEL STOPS

Revision: 4 November 2024 8:29 AM
Boplan reference: PL1200





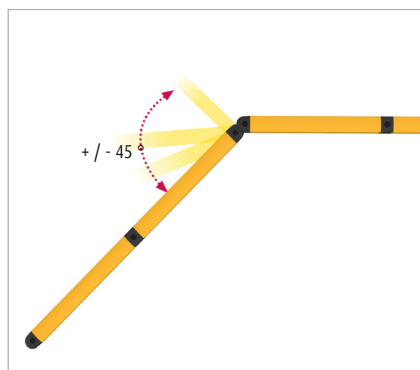
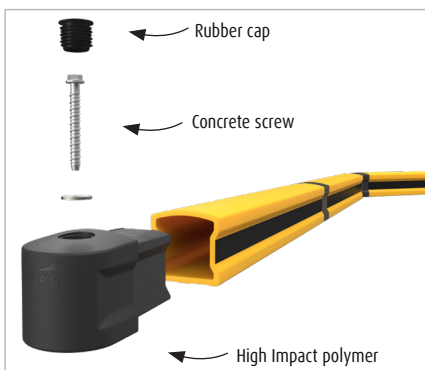
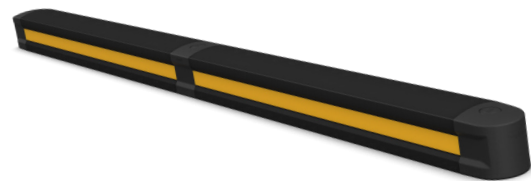
PRODUCT SPECIFICATIONS

APPLICATION	
Environment	Ground level protection - Wall protection (refrigerator walls, decorative walls, sandwich panels) - Wheel guide for pallet trucks or trolleys in busy traffic lanes - Protection of machines and infrastructures - Indoor and outdoor use - Food industry
MATERIAL	
Connection pieces / Rails	Extrilene® - UV resistant - Fire class E [†] - Non conductive - Impervious to most chemicals ^{**}
Cap / Seal	Sustainable elastomer
STANDARD COLOURS	
Connection pieces	Black
Rail	Yellow/Black - Black/Yellow (Yellow RAL 1003 & Black RAL 9005)

[†]Classification according to EN 13501-1:2007 +A1:2009 - Fire classification of construction products and building elements.

^{**}Ask your local sales office for resistance to specific chemicals.

		FIXATIONS		
			ZC (Zinc coated)	SS (Stainless steel)
STANDARD	Concrete screw		Ø12mm x 100mm	Not available
	Anchor rod (Chemical)		M12 x 120mm + Chemical resin	M12 x 120mm + Chemical resin
ALTERNATIVES	Wedge Anchor		M12 x 120mm	Not available
	Asphalt anchor		Bolt M10 x 40mm + Screw Ø16mm	Not available



FEATURES AND FUNCTIONALITY - FLIP120L M

BOPLAN FLIP120L M		
IMPACT RATING	45°	90°
E80 < 80 kJ		
E60 < 60 kJ		
E50 < 50 kJ		
E40 < 40 kJ		
E35 < 35 kJ		
E30 < 30 kJ		
E25 < 25 kJ		
E20 < 20 kJ		
E15 < 15 kJ		
E10 < 10 kJ		
E5 < 5,0 kJ	3.6kJ	2.6kJ
E2 < 2,5 kJ		
DEFLECTION At maximum impact energy	D = NA	D = 201 mm
TEST CONDITIONS TEMPERATURE: 20°C IMPACT ANGLE: 90° - IMPACT HEIGHT: 75 mm STANDARD RAIL LENGTH: 1400 mm TEST FLOOR: CONCRETE C25/30 - 160 mm MANUFACTURER ANCHOR PULL OUT: 12.6 kN	TEST VEHICLE WEIGHT: 3762 KG TYPE: BOPLAN IMPACT TEST VEHICLE SIZE (L x W x h): 3100 x 1100 x 1150 mm CONTACT AREA: STEEL BUMPER WIDTH: 1000 mm	BOPLAN TEST LAB Muiselstraat 12 8560 Moorsele Belgium
SUCCESS CRITERIA VEHICLE STOPPED - ASI (ACCELERATION SEVERITY INDEX) <0.5		

SIZE	
Height	120 mm
Profile section	120 mm x 120 mm (10 mm thick)
Standard rail length	see next page

REQUIREMENTS	
Compatibility	Below TB 400 / TB400 Plus / HP Plus - ...
Floor	Industrial concrete, flat surface
Concrete quality	minimum C25/30
Concrete floor plate thickness (mm)	minimum 150
Operational temperature	-10°C up to +40°C
Water and humidity	Zinc coated fixations: indoor and outdoor use in most environments

