

FLIP200F BOPLAN KICK RAILS AND WHEEL CHOCKS

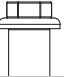
Revision: 19 March 2024 12:13 PM
Boplan reference: PL2020...

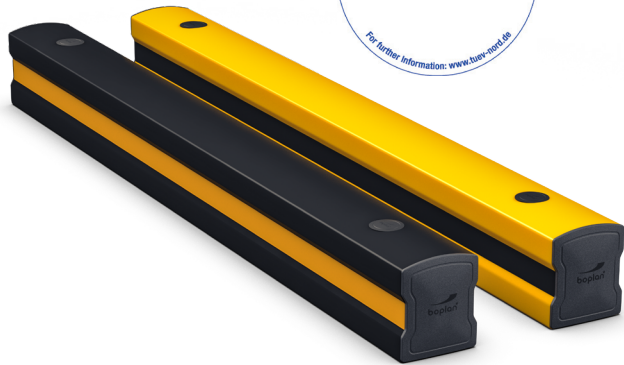
PRODUCT SPECIFICATIONS

APPLICATION	
Environment	Ground level protection - Wall protection (refrigerator walls, decorative walls, sandwich panels) - Wheel guide for pallet trucks or trolleys in busy traffic lanes - Protection of machines and infrastructure - Below a Boplan traffic barrier system - Indoor and outdoor use - Food Industry
MATERIAL	
Plinth	Extrilene® - UV resistant - Fire class E* - Non conductive - Impervious to most chemicals**
Endcap	SEBS rubber Black
STANDARD COLORS	
Plinth	Yellow - Black / Black - Yellow

*Classification according to EN 13501-1:2007 +A1:2009 - Fire classification of construction products and building elements.
**Ask your local sales office for resistance to specific chemicals.



		FIXATIONS	
		ZC (Zinc coated)	SS (Stainless steel)
STANDARD	Concrete screw	 Ø17mm x 135mm	Not available
ALTERNATIVE	Wedge Anchor	 Ø18 (M12) x 130mm	Not available



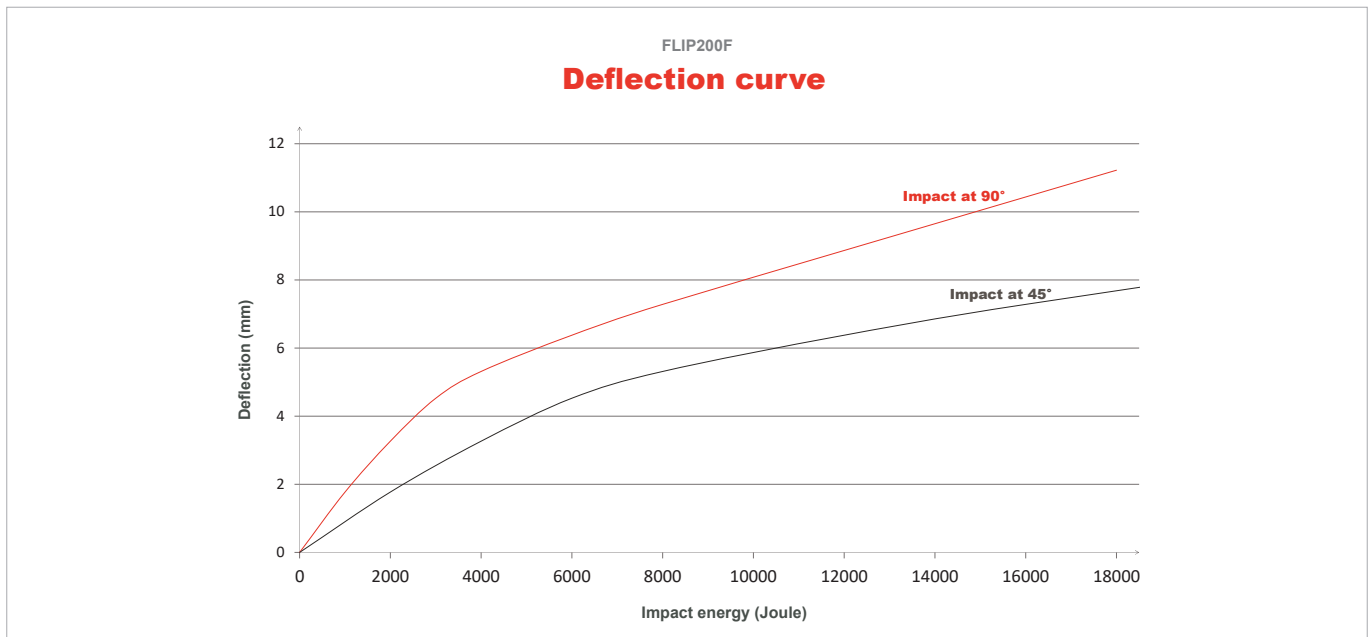
FEATURES AND FUNCTIONALITY - FLIP200F

boplan IMPACT LABEL FOR SAFETY BARRIERS		
BOPLAN FLIP200F		
IMPACT RATING	45°	90°
E50 < 50 kJ		
E40 < 40 kJ		
E30 < 30 kJ		
E25 < 25 kJ		
E20 < 20 kJ	22 kJ	
E15 < 15 kJ		17 kJ
E12 < 12 kJ		
E10 < 10 kJ		
E7 < 7.5 kJ		
E5 < 5.0 kJ		
E2 < 2.5 kJ		
E1 < 1.0 kJ		

IMPACT RESULTS Deflection at 90°: 285 mm / 11.22 Inch At maximum impact energy		SUCCESS CRITERIA VEHICLE STOPPED ASI (ACCELERATION SEVERITY INDEX) < 0.5
TEST CONDITIONS TEMPERATURE: 20°C / 68°F IMPACT HEIGHT: 88 mm / 3.46 Inch → D: 285 mm / 11.22 Inch TEST FLOOR: CONCRETE SLAB C25/30 - 150 mm / 6 Inch FIXATION: CONCRETE SCREW Ø17 x 135 mm	BOPLAN TEST LAB Muizelstraat 12 8560 Moorsele Belgium	Approved by: TUV NORD Systems PAS 13:2017 compliant
TEST VEHICLE: TYPE: BOPLAN IMPACT TEST VEHICLE WEIGHT: 3869 Kg / 8529.68 lbs SIZE (L x W x h): 3100 x 1100 x 1150 mm / 122 x 43.3 x 45.3 Inch CONTACT AREA, STEEL BUMPER WIDTH: 1000 mm / 39.4 Inch	IL-FLIP200F-20230319	

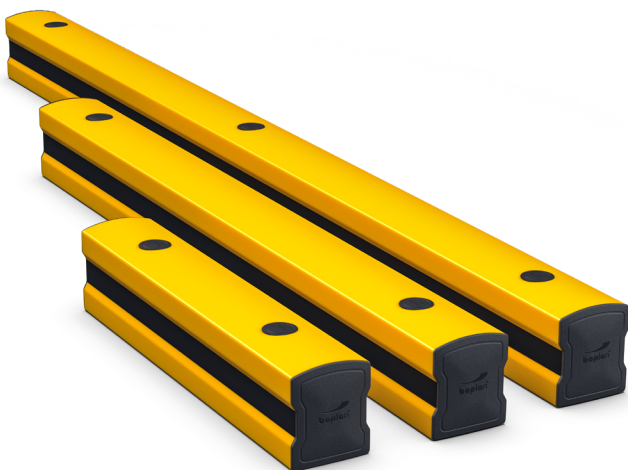
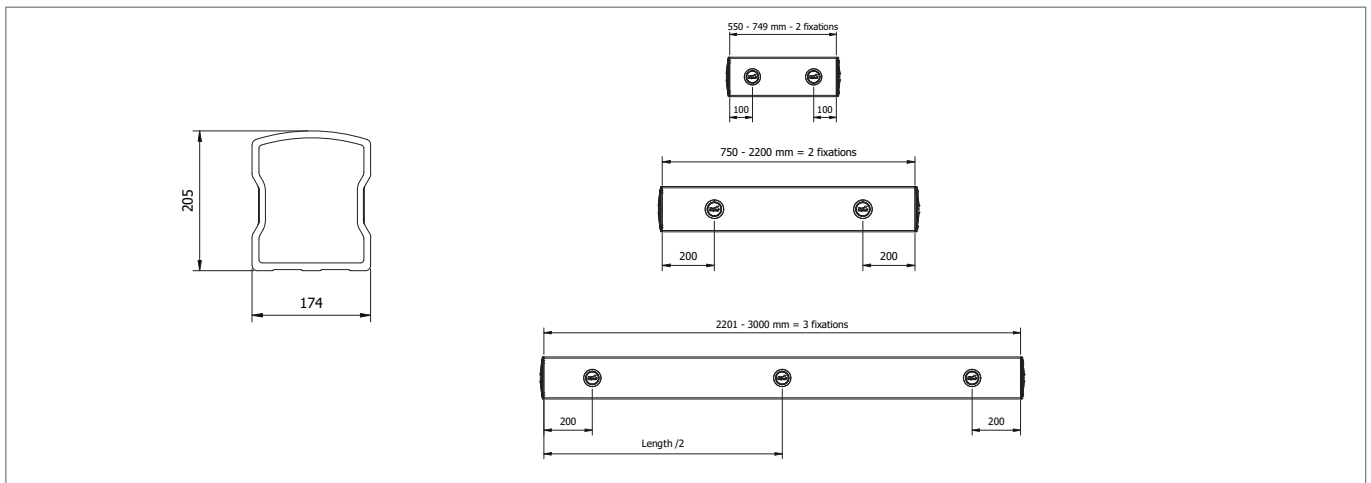
REQUIREMENTS	
Concrete quality	minimum C25/30
Concrete floor plate thickness	minimum 6 in
Operational temperature	14°F up to 104°F
Water and humidity	Zinc coated fixations: indoor and outdoor use in most environments

SIZE	
Height	8 in
Profile section	8 in x 6.8 in (0.4 in thick)
Standard rail length	24 - 36 - 40 - 48 - 60 - 72 - 78 - 120 in



REFERENCE LIST - FLIP200F

	YELLOW/Black	BLACK/Yellow
24 in (2fix)	PL2020-0610-0002YB	PL2020-0610-0002BY
36 in (2fix)	PL2020-0915-0001YB	PL2020-0915-0001BY
40 in (2fix)	PL2020-1000-0001YB	PL2020-1000-0001BY
48 in (2fix)	PL2020-1220-0002YB	PL2020-1220-0002BY
60 in (2fix)	PL2020-1525-0001YB	PL2020-1525-0001BY
72 in (2fix)	PL2020-1828-0002YB	PL2020-1828-0002BY
78 in (2fix)	PL2020-1980-0002YB	PL2020-1980-0002BY
120 in (3fix)	PL2020-3048-0002YB	PL2020-3048-0002BY



250 <<< SPECSHEET

Boplan bv Head Office | Muizelstraat 12, 8560 Moorsele, Belgium | +32 56 20 64 20 | sales@boplan.com | www.boplan.com

DISCLAIMER: ALL PRODUCT SPECIFICATIONS AND DATA ARE SUBJECT TO CHANGE WITHOUT NOTICE TO IMPROVE RELIABILITY, FUNCTION OR DESIGN OR OTHERWISE.
 © Boplan, the Boplan logo, Flex Impact and RackBull are trademarks of Boplan bv. All other trademarks are property of their respective owners.