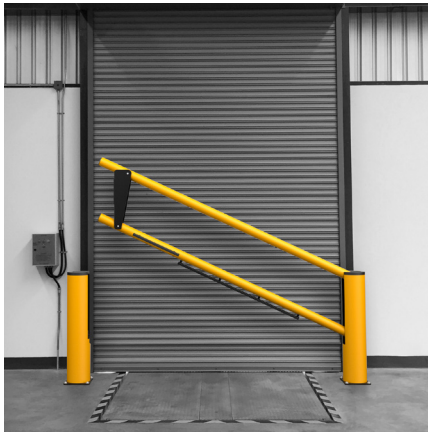


DOCK GATE

SAFETY GATES

Revision: 30 May 2024 5:03 PM
Boplan reference: DG2500...



PRODUCT SPECIFICATIONS

APPLICATION	
Protection	Double rail safety gate up to 3 meter.
Environment	Around loading docks Around loading pits
Features	Up to 3 meter wide Compact design, no loss of space Soft close system - closing speed dependant on gate size (5 to 10 seconds) Effortless opening and closing Integrated shutter mechanism for limited finger trap hazard Flexible and impact resistant rail and post system UV resistant No maintenace required Reinforced version available
MATERIAL	
Housing	Extrilene® - UV resistant - Fire class E* - Non conductive - Impervious to most chemicals**
Caps	Sustainable elastomer
Baseplate and internal parts	Zinc coated steel / aluminum
STANDARD COLOURS	
Posts	Standard: Yellow RAL 1003
Rails	Standard: Yellow RAL 1003
Caps and visible metals	Standard: Black RAL 9005

*Classification according to EN 13501-1:2007 +A1:2009 - Fire classification of construction products and building elements.
**Ask your local sales office for resistance to specific chemicals.





FIXATIONS				
			ZC (Zinc coated)	SS (Stainless steel)
STANDARD	Concrete screw		Ø12mm x 100mm	Not available
	Anchor rod (Chemical)		M12 x 120mm + Chemical resin	Not available
ALTERNATIVES	Asphalt anchor		Bolt M10 x 40mm + Screw Ø16mm	Not available
	Spit anchor		Bolt M12 x 100mm + Plug Ø20mm	Not available



FEATURES AND FUNCTIONALITY - DOCK GATE

SIZE	
Height posts	1175 mm
Profile section tubes	Ø100 mm (8 mm thick)
Profile section posts	Ø250 mm (11 mm thick)
Baseplate	275 mm x 275 mm (10 mm thick)

REQUIREMENTS	
Concrete quality	minimum C25/30
Concrete floor plate thickness (mm)	minimum 150 mm
Concrete slab dimension around posts (mm)	600 (h) x 600 (w) x 500 (d)
Operational temperature	0°C up to +40°C
Water and humidity	Use indoors or in occasionally wet locations

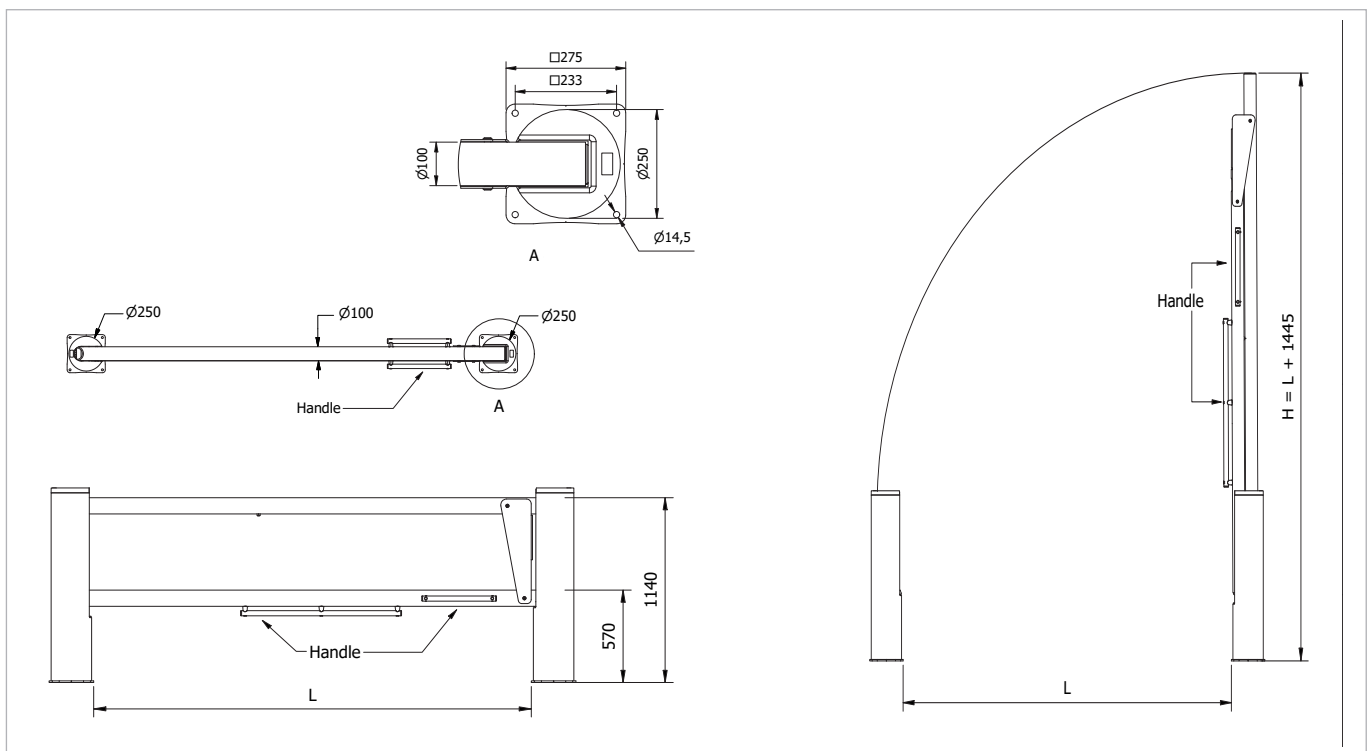
boplan		IMPACT LABEL FOR SAFETY BARRIERS																									
BOPLAN DG DOCK GATE																											
IMPACT RATING		90°																									
<table border="1"> <tbody> <tr><td>E80</td><td>< 80 kJ</td></tr> <tr><td>E60</td><td>< 60 kJ</td></tr> <tr><td>E50</td><td>< 50 kJ</td></tr> <tr><td>E40</td><td>< 40 kJ</td></tr> <tr><td>E35</td><td>< 35 kJ</td></tr> <tr><td>E30</td><td>< 30 kJ</td></tr> <tr><td>E25</td><td>< 25 kJ</td></tr> <tr><td>E20</td><td>< 20 kJ</td></tr> <tr><td>E15</td><td>< 15 kJ</td></tr> <tr><td>E10</td><td>< 10 kJ</td></tr> <tr><td>E5</td><td>< 5,0 kJ</td></tr> <tr><td>E2</td><td>< 2,5 kJ</td></tr> </tbody> </table>		E80	< 80 kJ	E60	< 60 kJ	E50	< 50 kJ	E40	< 40 kJ	E35	< 35 kJ	E30	< 30 kJ	E25	< 25 kJ	E20	< 20 kJ	E15	< 15 kJ	E10	< 10 kJ	E5	< 5,0 kJ	E2	< 2,5 kJ		
E80	< 80 kJ																										
E60	< 60 kJ																										
E50	< 50 kJ																										
E40	< 40 kJ																										
E35	< 35 kJ																										
E30	< 30 kJ																										
E25	< 25 kJ																										
E20	< 20 kJ																										
E15	< 15 kJ																										
E10	< 10 kJ																										
E5	< 5,0 kJ																										
E2	< 2,5 kJ																										
TEST CONDITIONS TEMPERATURE: 20°C IMPACT HEIGHT: 520 mm IMPACT ANGLE: 90° TEST FLOOR: CONCRETE C25/30 - 160 mm MANUFACTURER ANCHOR PULL OUT: 7,7 kN	 TEST VEHICLE WEIGHT: 3350 KG TYPE: COMMERCIAL FORK LIFT SIZE (L x W x h): 1890 x 1020 x 1970 mm CONTACT AREA: STEEL BUMPER WIDTH: 600 mm	BOPLAN TEST LAB  Muizelstraat 12 8560 Moorsele Belgium																									
SUCCESS CRITERIA VEHICLE STOPPED - ASI (ACCELERATION SEVERITY INDEX) < 0.5																											

* The impact performance has not been tested for gate sizes (inner width) ≠ 1800 mm.

REFERENCE LIST - DOCK GATE

Reference	Description	Inner width (L)	Height when open (H)	Weight
DG2500-1800-S200YEZ	Dock gate 1800 - YE - ZC - (including 2 posts)	1800 mm	3245 mm	82,5 kg
DG2500-2100-S200YEZ	Dock gate 2100 - YE - ZC - (including 2 posts)	2100 mm	3545 mm	83,7 kg
DG2500-2400-S200YEZ	Dock gate 2400 - YE - ZC - (including 2 posts)	2400 mm	3845 mm	84,9 kg
DG2500-2700-S200YEZ	Dock gate 2700 - YE - ZC - (including 2 posts)	2700 mm	4145 mm	86,1 kg
DG2500-3000-S200YEZ	Dock gate 3000 - YE - ZC - (including 2 posts)	3000 mm	4445 mm	87,3 kg

DRAWING AND DIMENSIONS - DOCK GATE



COMPLIANCE

Designed to meet OSHA* requirements	The top edge height of top rail 110cm is above the walking surface	✓
	The midrail is at 50cm above walking surface	✓
	The gate is capable of withstanding 90 kg force applied in a downward or outward direction. The deflection during the test of the top rail may not cause the top rail to be lower than 99cm above walking surface.	✓
	No sharp edges; smooth surface	✓

* OSHA 1910.29 B Fall protection systems and falling object protection-criteria and practices.