

TB 200

SAFETY BARRIERS

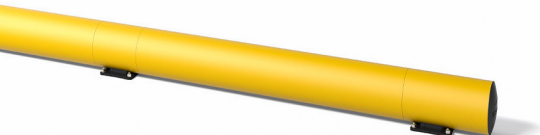
Revision: 19 December 2024 1:50 PM
Boplan reference: TB200...

PRODUCT SPECIFICATIONS

APPLICATION			
Environment	The TB 200 is installed low to the ground and therefore serves primarily as a wheel guide or wheel stopper.		
Impact performance at 90°	POST: 9,000 Joule (Eq. to 5 tons - 4.2 mph)		
	RAIL: 21,800 Joule (Eq. to 5 tons - 6.5 mph)		
MATERIAL			
Posts and rails	Extrilene® - UV resistant - Fire class E* - Non conductive - Impervious to most chemicals**		
Caps	Sustainable elastomer		
STANDARD COLOURS			
End post	Yellow RAL 1003		
Mid post	Yellow RAL 1003		
Impact tube	Yellow RAL 1003		
BASEPLATES			
	Steel	Zinc Coated Steel	Stainless steel
Material	Steel 37	Steel 37	Stainless steel 304
Coating	Laquered	Electroplated + Laquered	No coating
Colour	High gloss black	Mat black	Natural colour

⁺Classification according to EN 13501-1:2007 + A1:2009 - Fire classification of construction products and building elements.

^{**}Ask your local sales office for resistance to specific chemicals.





FIXATIONS				
			ZC (Zinc coated)	SS (Stainless steel)
STANDARD	Wedge anchor		1/2 in x 4 1/2 in	Not available
	Wedge anchor		M12 x 120 mm	M12 x 120 mm
ALTERNATIVES	Anchor rod (Chemical)		M12 x 120 mm + Chemical resin	M12 x 120 mm + Chemical resin
	Asphalt anchor		Bolt M10 x 40 mm + Screw Ø16 mm	Not available
	Spit anchor		Bolt M12 x 100 mm + Plug Ø20 mm	Not available

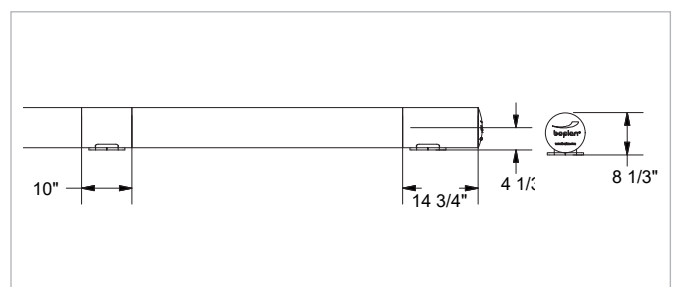
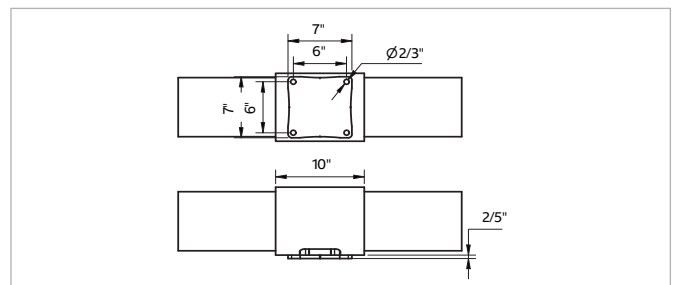
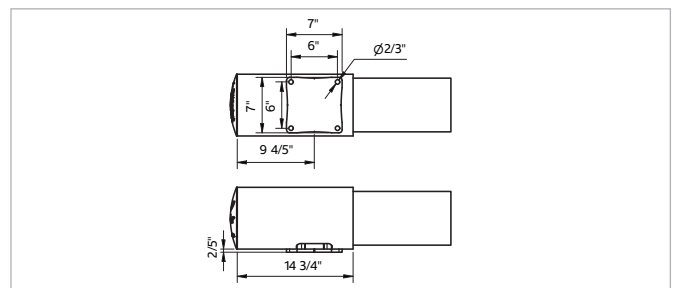


FEATURES AND FUNCTIONALITY - TB 200

SIZE	
Height end posts	8 1/3 in
Height mid post	8 1/3 in
Profile section tubes	Ø8 in (2/5 in thick)
Profile section end posts	Outer tube: Ø8 in (2/5 in thick) Inner profile: 4 2/5 x 4 2/5 in (1/3 in thick)
Profile section mid posts	Profile: 4 2/5 x 4 2/5 in (1/3 in thick)
Standard rail length	CC60 in (Tube length - 50 in)
Baseplate	End Post: 7 x 7 in (1/3 in thick) Mid Post: 7 x 7 in (1/3 in thick)

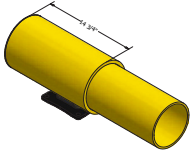
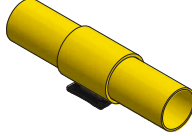
REQUIREMENTS	
Concrete quality	minimum 4000 PSI (C25/30)
Concrete floor plate thickness	minimum 6 in
Concrete slab dimension around posts (mm)	23 2/3 (h) x 23 2/3 (w) x 19 3/4 (d)
Operational temperature	14°F up to 104°F
Water and humidity	Steel (standard): dry indoor use only. Zinc coated: outdoor use in most environments. Stainless steel: outdoor use or frequent exposure to water and humidity.

IMPACT LABEL FOR SAFETY BARRIERS		
BOPLAN TB 200		
		
IMPACT RATING	45°	90°
E80 < 80 kJ		
E60 < 60 kJ		
E50 < 50 kJ		
E40 < 40 kJ		
E35 < 35 kJ	30,8 kJ	
E30 < 30 kJ		
E25 < 25 kJ		21,8 kJ
E20 < 20 kJ		
E15 < 15 kJ		
E10 < 10 kJ		
E5 < 5,0 kJ		
E2 < 2,5 kJ		
TEST CONDITIONS TEMPERATURE: 20°C / 68°F IMPACT HEIGHT: 110 mm / 4.3 in IMPACT ANGLE: 90° TEST FLOOR: CONCRETE C25/30 - 160 mm / 6.3 in MANUFACTURER ANCHOR PULL OUT: 7,9 kN	TEST VEHICLE WEIGHT: 2300 KG / 5070 lbs TYPE: COMMERCIAL FORK LIFT SIZE (L x W x H): 1890 x 1020 x 1970 mm SIZE (L x W x H): 74.4 x 40.2 x 77.5 in CONTACT AREA: STEEL BUMPER WIDTH: 600 mm / 23.6 in	ACCREDITED TEST LABORATORY  620 Route des Fromentaux 01500 Saint-Maurice-de-Rémens 01360 Bèlignieux France
SUCCESS CRITERIA VEHICLE STOPPED - ASI (ACCELERATION SEVERITY INDEX) < 0.5		



REFERENCE LIST - TB 200

POSTS

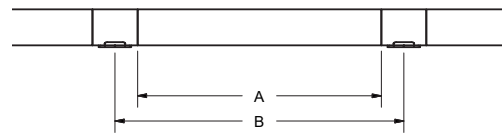
End post End post - Zinc coated End post - Stainless steel	TB2000-0001-EPYE TB2000-0001-EPYEZ TB2000-0001-EPYES	
Mid post Mid post - Zinc coated Mid post - Stainless steel	TB2000-0001-MPYE TB2000-0001-MPYEZ TB2000-0001-MPYES	

CURVES

Conn.tube Ø8 Curve 14 in - YE	TB2000-0350-C200YE	
Conn.tube Ø8 - 90° Curve 14 in - YE	TB2000-0350-C209YE	
Conn.tube Ø10 Curve 14 in - YE	TB2000-0350-C250YE	

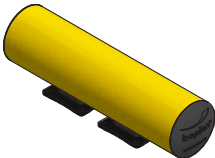
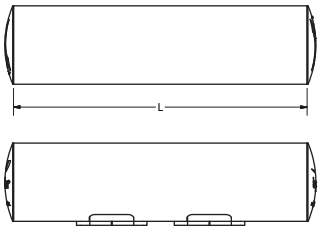
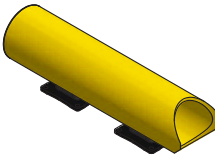
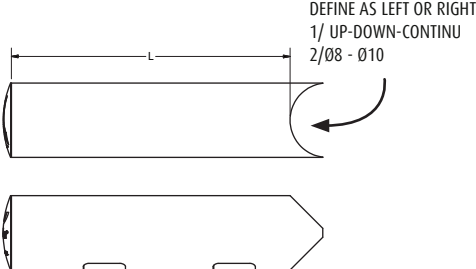
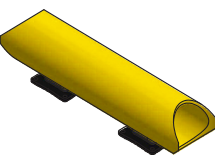
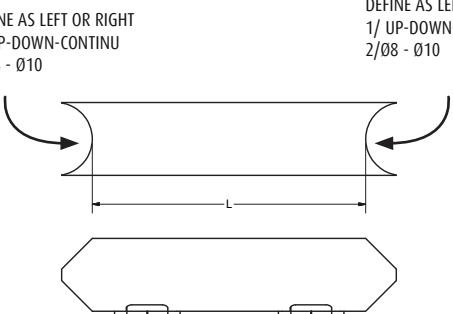
RAIL SETS

	Tube length (A)	CC length (B)	Reference
Standard rail	26 in	36 in	TB2000-0665-0915YE
Standard rail	32 in	42 in	TB2000-0817-1067YE
Standard rail	38 in	48 in	TB2000-0970-1220YE
Standard rail	50 in	60 in	TB2000-1275-1525YE
Standard rail	62 in	72 in*	TB2000-1578-1828YE
Standard rail	68 in	78 in*	TB2000-1730-1980YE
Short rail	26 - 38 in	36 - 48 in	TB2009-0048-SRYE
Long rail	50 - 62 in	60 - 72 in*	TB2009-0072-LRYE



* The impact performance has not been tested for tube lengths > 63 in.
Only use these lengths for non - critical applications.

REFERENCE LIST - TB 200

FIXED UNITS					
TYPE	LENGTH	BASE	REFERENCE YE		
no curves	30 in	Steel ZC SS	TB2000-0750-FUYE TB2000-0750-FUYEZ TB2000-0750-FUYES		
	30 - 68 in	Steel ZC SS	TB2001-1750-FUYE TB2001-1750-FUYEZ TB2001-1750-FUYES		
1 curve	30 in	Steel ZC SS	TB2000-0750-FU1CYE TB2000-0750-FU1CYEZ TB2000-0750-FU1CYES		
	30 - 68 in	Steel ZC SS	TB2001-1750-FU1CYE TB2001-1750-FU1CYEZ TB2001-1750-FU1CYES		
2 curves	30 in	Steel ZC SS	TB2000-0750-FU2CYE TB2000-0750-FU2CYEZ TB2000-0750-FU2CYES		
	30 - 68 in	Steel ZC SS	TB2001-1750-FU2CYE TB2001-1750-FU2CYEZ TB2001-1750-FU2CYES		