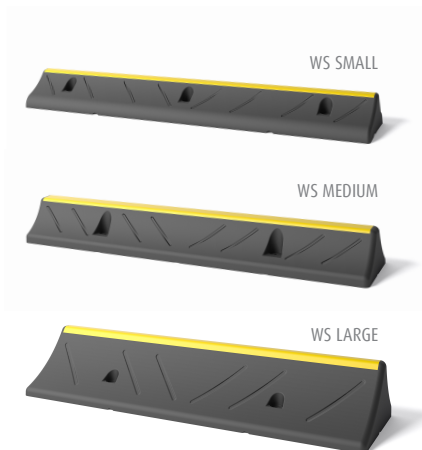




# WS WHEELSTOP

## KICK RAILS AND WHEEL STOPS

Revision: 9 December 2024 11:35 AM  
Boplan reference: WS...

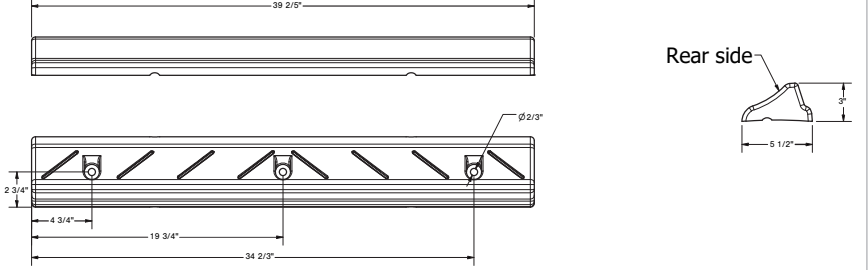
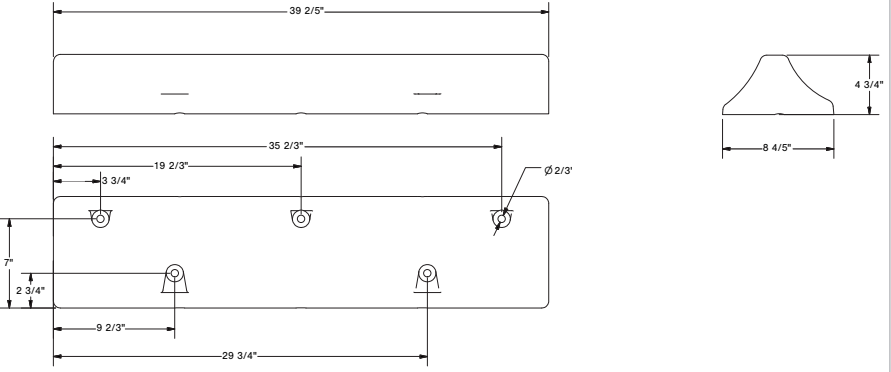


### PRODUCT SPECIFICATIONS

APPLICATION			
Environment	The Wheel Stop is designed to be installed in parking spaces. The yellow top edge gives optimal visibility. The rear side is designed to pull vehicles back when override. Very robust solution.		
Operational temperature	-58°F up to 140°F		
MATERIAL			
composition	100% made from recycled tyres.		
Exposure to light	UV resistant		
STANDARD COLOURS			
Wheelstop	Black with yellow highlight line.		
SIZE AND PROPERTIES			
	SMALL	MEDIUM	LARGE
Dimensions	Width: 39 2/5 in Depth: 5 1/2 in Height: 3 in	Width: 39 2/5 in Depth: 8 4/5 in Height: 4 3/4 in	Width: 39 2/5 in Depth: 11 4/5 in Height: 6 in
Weight	16 lbs	33 lbs	55 lbs
Number of fixations	3 pcs	5 pcs	5 pcs
Type of fixation	Screw bolt and plug Inox A2 Ø10 mm - Length = 120 mm Drill hole Ø plug = 14 mm Sw: 17 mm 	Concrete screw Zinc coated Ø17 mm - Length = 130 mm Drill hole Ø screw = 14 mm Sw: 21 mm 	
Maximum weight of vehicle	5 ton	25 ton	40 ton



## REFERENCE LIST - WS WHEELSTOP

<p>Wheel Stop S 39 2/5 x 5 1/2 x 3 in (3 fixations) - BL</p>	<p>WS0750-0140-1000BL</p>	
<p>Wheel Stop M 39 2/5 x 8 x 4 1/3 in (5 fixations) - BL</p>	<p>WS1100-0200-1000BL</p>	
<p>Wheel Stop L 39 2/5 x 11 4/5 x 6 in (5 fixations) - BL</p>	<p>WS1500-0300-1000BL</p>	