



**READY  
FOR  
IMPACT**



# **KICK RAILS**

**GROUND-LEVEL PROTECTION**



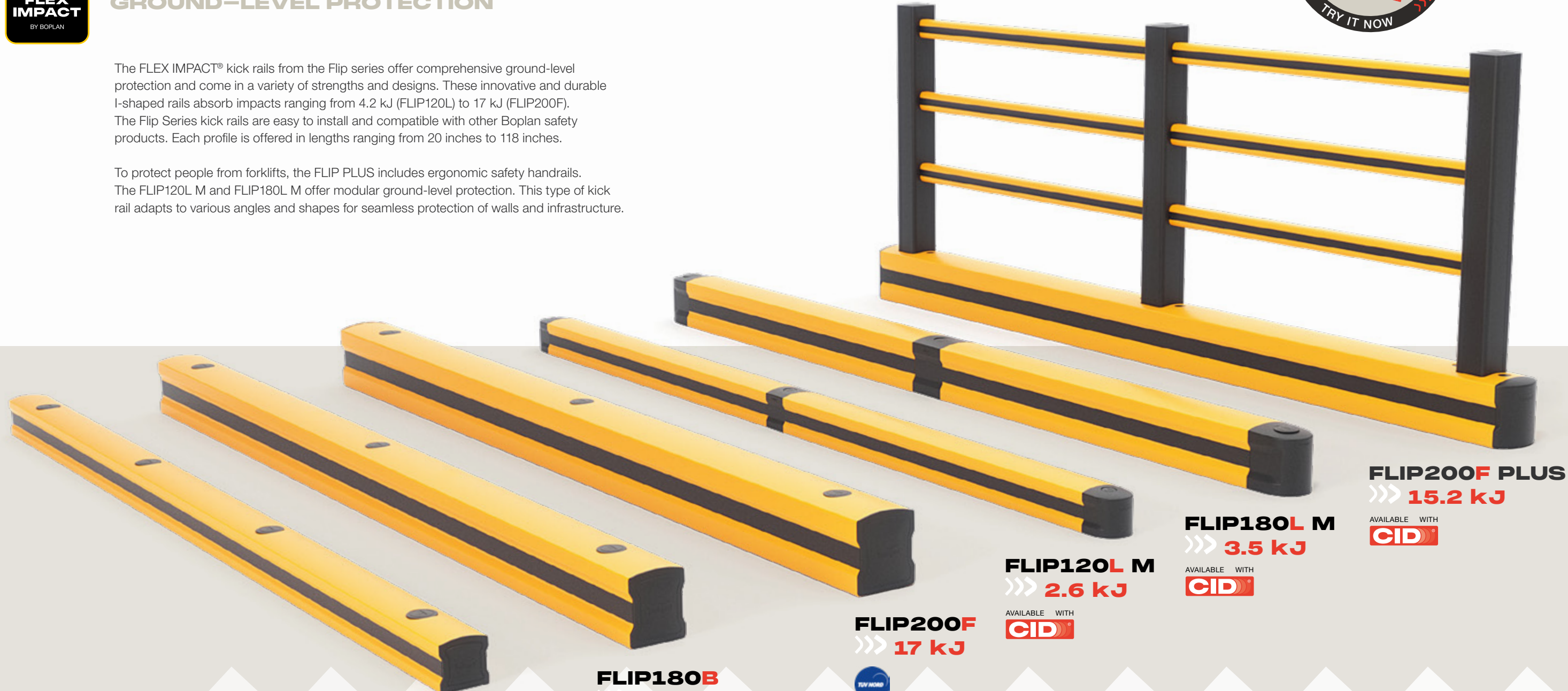
# KICK RAILS



## GROUND-LEVEL PROTECTION

The FLEX IMPACT® kick rails from the Flip series offer comprehensive ground-level protection and come in a variety of strengths and designs. These innovative and durable I-shaped rails absorb impacts ranging from 4.2 kJ (FLIP120L) to 17 kJ (FLIP200F). The Flip Series kick rails are easy to install and compatible with other Boplan safety products. Each profile is offered in lengths ranging from 20 inches to 118 inches.

To protect people from forklifts, the FLIP PLUS includes ergonomic safety handrails. The FLIP120L M and FLIP180L M offer modular ground-level protection. This type of kick rail adapts to various angles and shapes for seamless protection of walls and infrastructure.



**PROTECTION AGAINST  
IMPACTS UP TO  
>>> 17 KJ**

**FLIP120L**  
>>> 4.2 kJ

**FLIP180B**  
>>> 8.1 kJ

**FLIP200F**  
>>> 17 kJ

**FLIP120L M**  
>>> 2.6 kJ

AVAILABLE WITH  
**CID**

**FLIP180L M**  
>>> 3.5 kJ

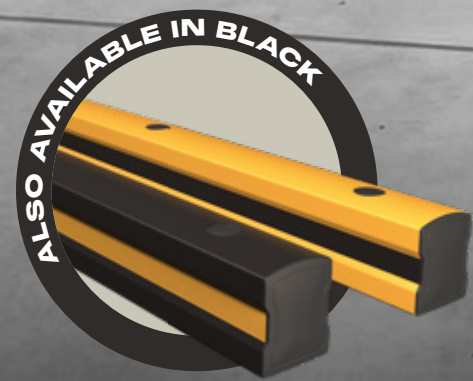
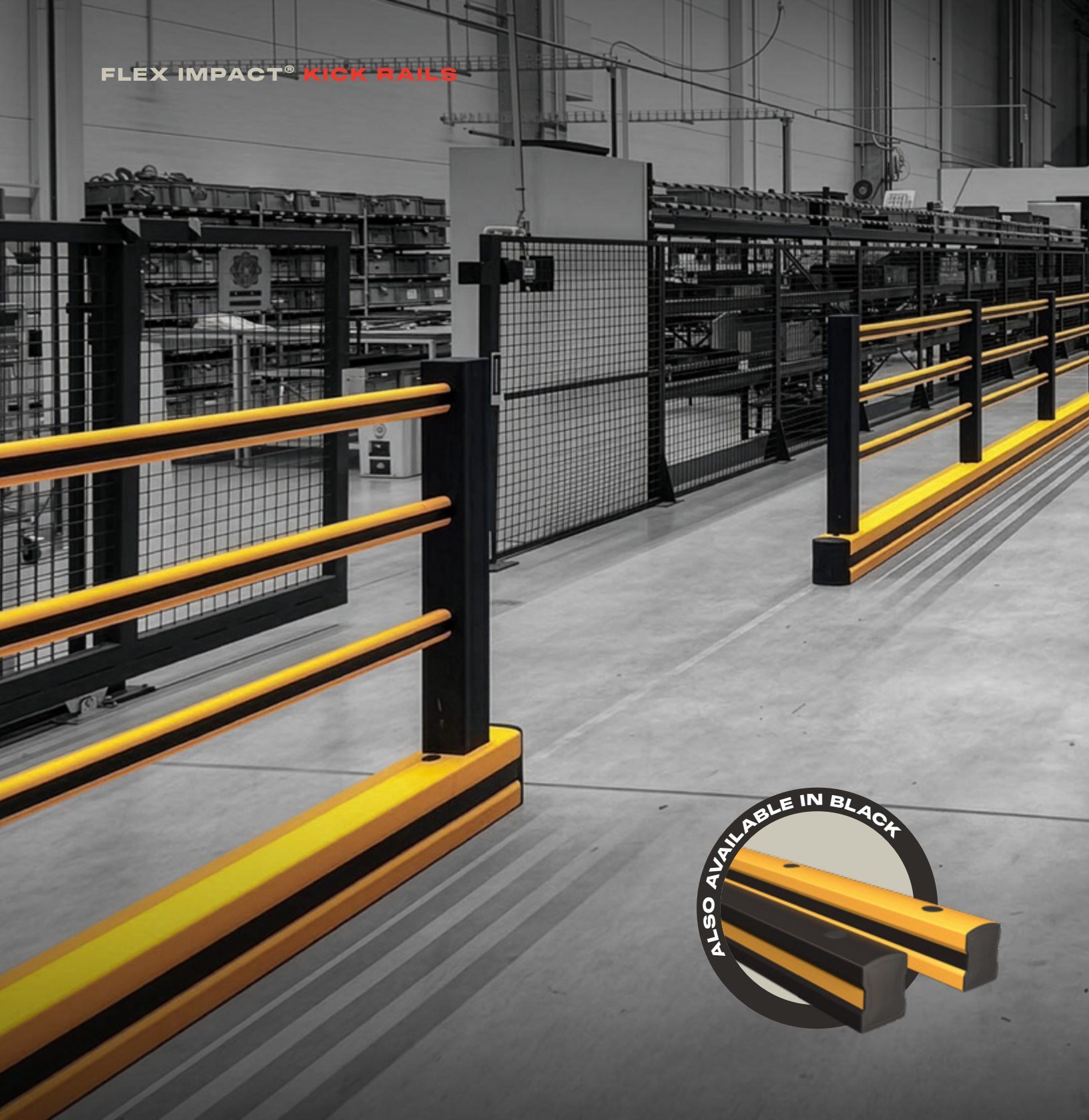
AVAILABLE WITH  
**CID**

**FLIP200F PLUS**  
>>> 15.2 kJ

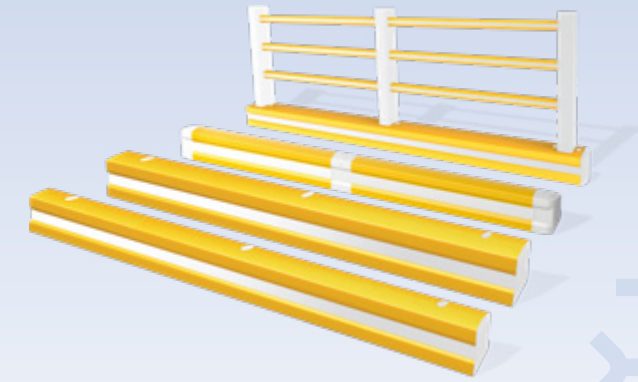
AVAILABLE WITH  
**CID**



WITH BOPLAN'S PATENTED CID® SYSTEM, YOU CAN INSTANTLY IDENTIFY WHERE YOUR SAFETY PRODUCT EXPERIENCED A HEAVY IMPACT. SEE PAGE 9 FOR MORE INFORMATION.



The FLIP180B, FLIP200F, FLIP180L M, and FLIP200F PLUS kick rails are also available in versions designed for use in temperatures as low as -22°F.



### KEY FEATURES AND BENEFITS



#### IMPACT-RESISTANT AND FLEXIBLE

Our products are made from Extrilene, a premium-quality polymer. This material is ideal for absorbing heavy impacts.



#### LOW MAINTENANCE

FLEX IMPACT® kick rails require minimal to no maintenance. With proper use, our systems have an exceptionally long lifespan.



#### RESISTANT TO CHEMICALS AND UV RAYS

Our weather-resistant kick rails resist chemicals and won't rust. They are ideal for environments where chemicals are frequently used or where strict hygiene standards apply. Bacteria do not adhere to the polymer, making it easy to clean.



#### FOR INDOOR AND OUTDOOR USE



#### QUICK AND EASY SETUP



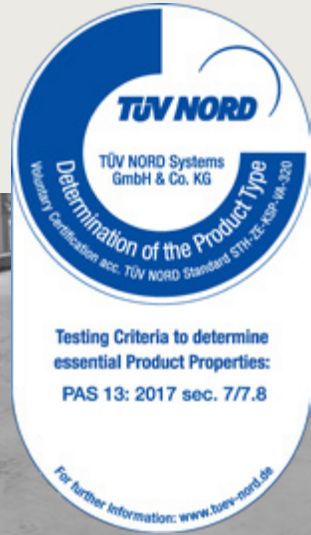
#### OPTIMAL VISIBILITY



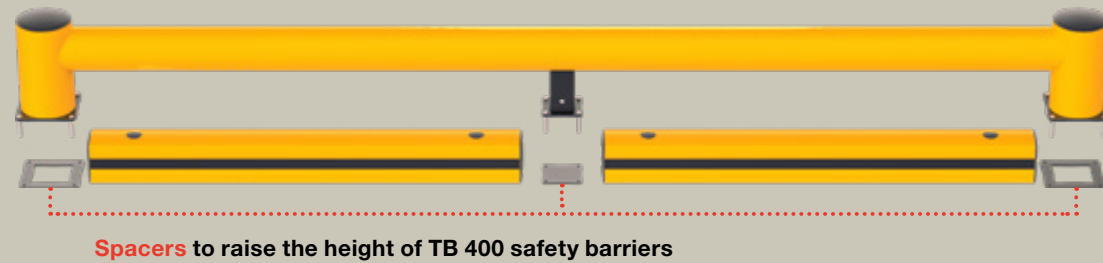
### USE FLIP KICK RAILS FOR:

- Ground-level impact protection
- Protection of fragile structures like refrigerator walls, decorative walls, and sandwich panels
- Protection of machinery, equipment, and infrastructure
- Cost-effective rack protection
- Wheel guide for pallet trucks and goods carts in aisles

**KICK RAILS FOR  
GROUND-LEVEL PROTECTION**



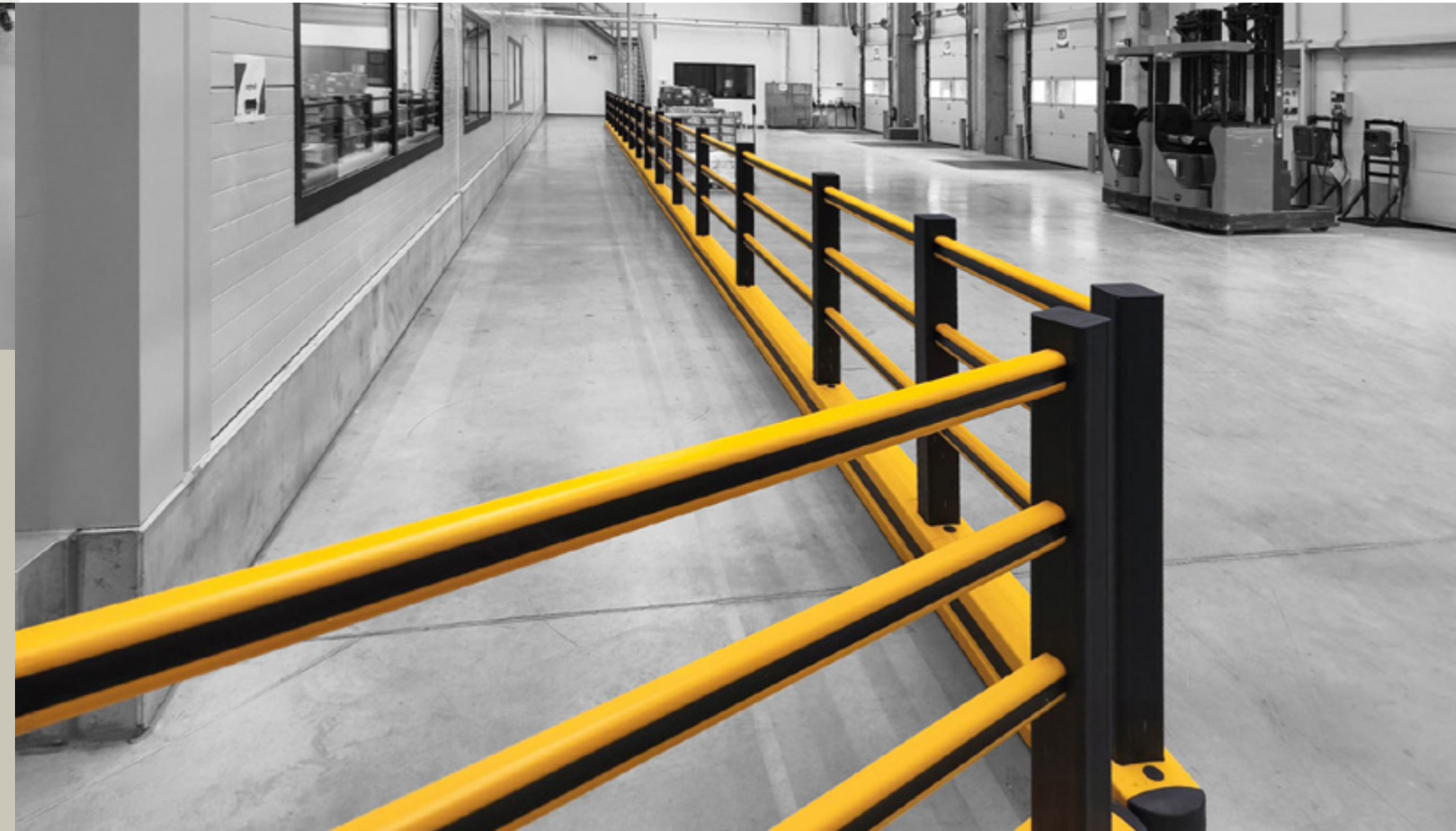
**PAIR THE FLIP200F KICK RAIL  
WITH TB 400 SAFETY BARRIERS**



**KICK RAILS TO GUIDE PEDESTRIANS AND  
OFFER GROUND-LEVEL PROTECTION**



**FLIP200F PLUS**  
>>> 15.2 kJ



**FLEX IMPACT® KICK RAILS**

**MODULAR KICK RAILS**

Our modular kick rails conform to the contours and angles of walls, machines, and infrastructure. This provides seamless protection. End pieces, middle pieces, universal angle pieces, and 90° corner pieces allow for modular configuration tailored to your business needs.



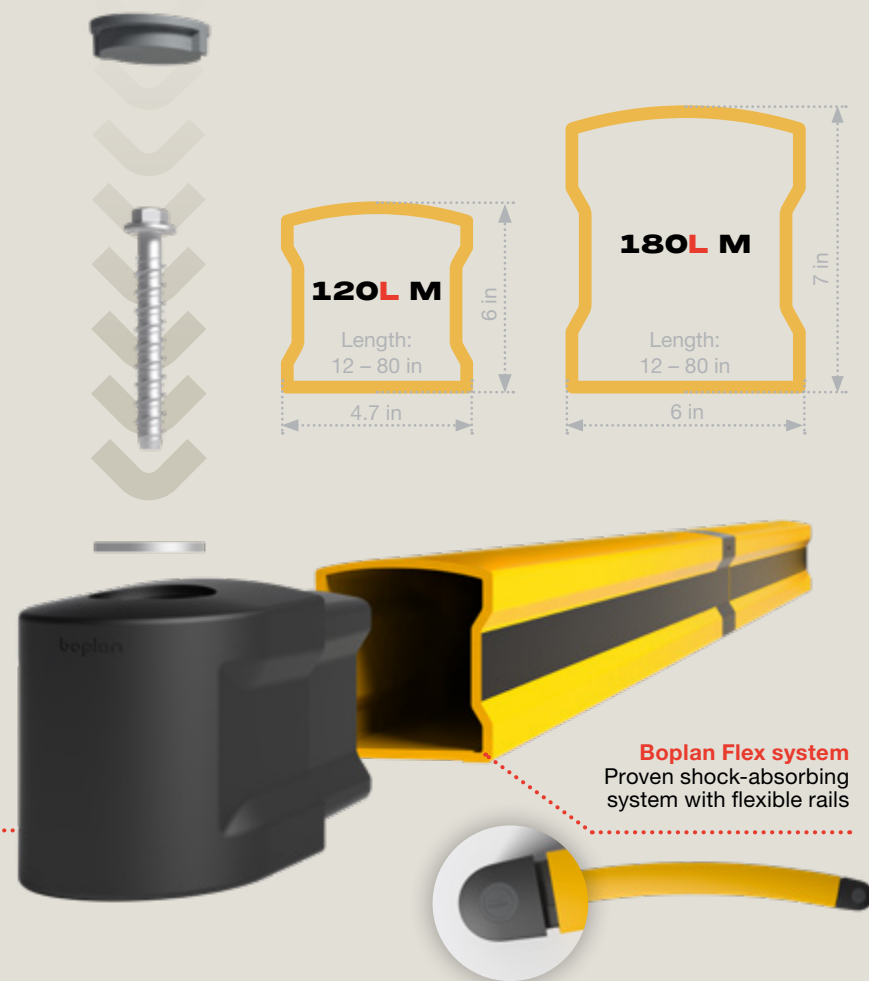
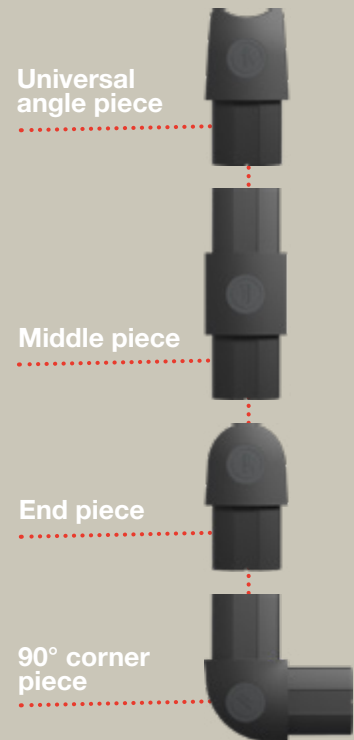
**FLIP120L M**  
 >>> **2.6 kJ**



**FLIP180L M**  
 >>> **3.5 kJ**



**IMPACT-RESISTANT CONNECTORS**



**CID® CRITICAL IMPACT SENSOR**

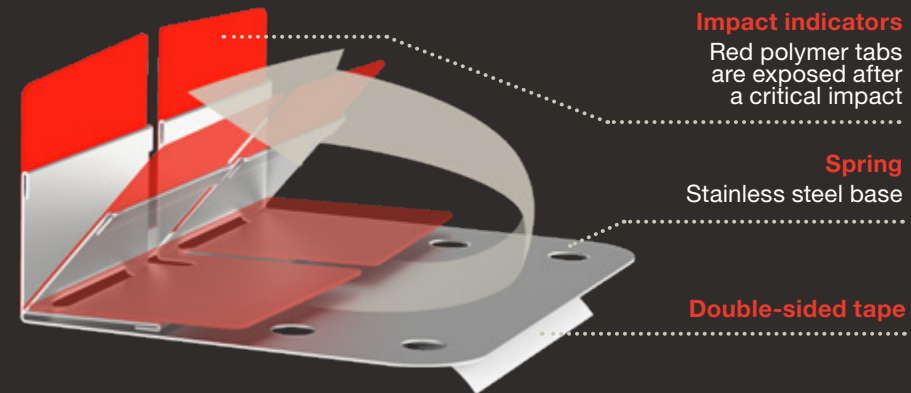
**QUICKLY LOCATE WHERE A MAJOR COLLISION HAS HAPPENED AND DETERMINE IF TECHNICAL INSPECTION OF YOUR KICK RAILS IS NECESSARY**

Although safety equipment may seem undamaged on the outside, an impact might have compromised its functional integrity, which—without CID®—can only be verified through a technical inspection.

The red CID® label becomes visible only after critical collisions, alerting you to potential danger zones where safety could be compromised.

Additionally, CID® helps you identify areas in the workplace that experience frequent heavy shocks, indicating where additional protective and preventive measures are necessary.

This safety improvement might involve reevaluating the traffic plan, modifying the workplace layout, adding more signage, increasing forklift drivers' awareness and accountability, installing stronger safety solutions, etc.



**BEFORE IMPACT**



**DURING IMPACT**



**AFTER CRITICAL IMPACT**



**BOPLAN'S PATENTED CID® SYSTEM LETS YOU QUICKLY IDENTIFY WHERE YOUR SAFETY PRODUCT HAS EXPERIENCED A HEAVY IMPACT**

### **BOPLAN HEADQUARTERS**

Muizelstraat 12  
8560 Moorsele, Belgium  
+32 56 20 64 20  
info@boplan.com

### **BOPLAN USA**

4350 W. White Road, St 300  
Flowery Branch, GA 30542  
+1 678-890-5906  
info@boplan.us

### **BOPLAN UK**

Science Centre, Wolverhampton Science Park  
Glaisher Drive, Wolverhampton WV10 9RU  
+44 1902 82 4280  
info@boplan.co.uk

### **BOPLAN DEUTSCHLAND**

IHP-Nord · Babenhäuser Str. 50  
63762 Großostheim  
+49 6026 999 51 90  
info@boplan.de

### **BOPLAN FRANCE**

617, Avenue de Bayonne  
64210 Bidart  
+33 (0)5 35 45 75 35  
info@boplan.fr

### **BOPLAN ESPAÑA**

Carrer d'Aragó 208, 2o 6a  
+34 936 81 66 88  
info@boplan.es

### **BOPLAN NEDERLAND**

Toermalijnring 100  
3316 LC Dordrecht  
+31 85 13 07 500  
info@boplan.nl

### **BOPLAN POLSKA**

Ul. Graniczna 34B / U16  
41-300 Dąbrowa Górnicza  
+48 32 224 74 85  
info@boplan.pl

### **BOPLAN ITALIA**

Via Privata Maria Teresa 7  
20123 Milano  
+39 02 81287168  
info@boplan.it

### **BOPLAN JAPAN**

4F Matsuoka II Building,  
1-2-11 Nijyooji Minami  
Nara City, Nara 630-8012  
+81 (0)742-93-8705  
info@boplan.co.jp

### **FOLLOW US**



**BOPLAN.COM**

For more information about our products,  
services, and worldwide network

