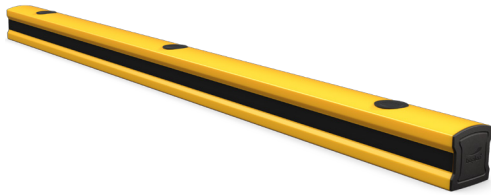


FLIP120L

KICK RAILS AND WHEEL STOPS

Revision: 24 April 2025 3:09 PM
Boplan reference: PL1210...







PRODUCT SPECIFICATIONS

APPLICATION	
Environment	<ul style="list-style-type: none"> Ground level protection Wall protection (refrigerator walls, decorative walls, sandwich panels) Wheel guide for pallet trucks or trolleys in busy traffic lanes Protection of machines and infrastructure Below a Boplan traffic barrier system Indoor and outdoor use Food Industry
MATERIAL	
Plinth	Extrilene® - UV resistant - Fire class E ⁺ - Non conductive - Impervious to most chemicals ^{**}
Endcap	Sustainable elastomer
STANDARD COLOURS	
Plinth	Yellow/Black - Black/Yellow (Yellow RAL 1003 & Black RAL 9005)





⁺Classification according to EN 13501-1:2007 +A1:2009 - Fire classification of construction products and building elements.

^{**}Ask your local sales office for resistance to specific chemicals.

		FIXATIONS	
		ZC (Zinc coated)	SS (Stainless steel)
STANDARD	Concrete screw	 Ø12mm x 100mm	Not available
	Anchor rod (Chemical)	 M12 x 120mm + Chemical resin	M12 x 120mm + Chemical resin
ALTERNATIVES	Wedge Anchor	 M12 x 120mm	Not available
	Asphalt anchor	 Bolt M10 x 40mm + Screw Ø16mm	Not available



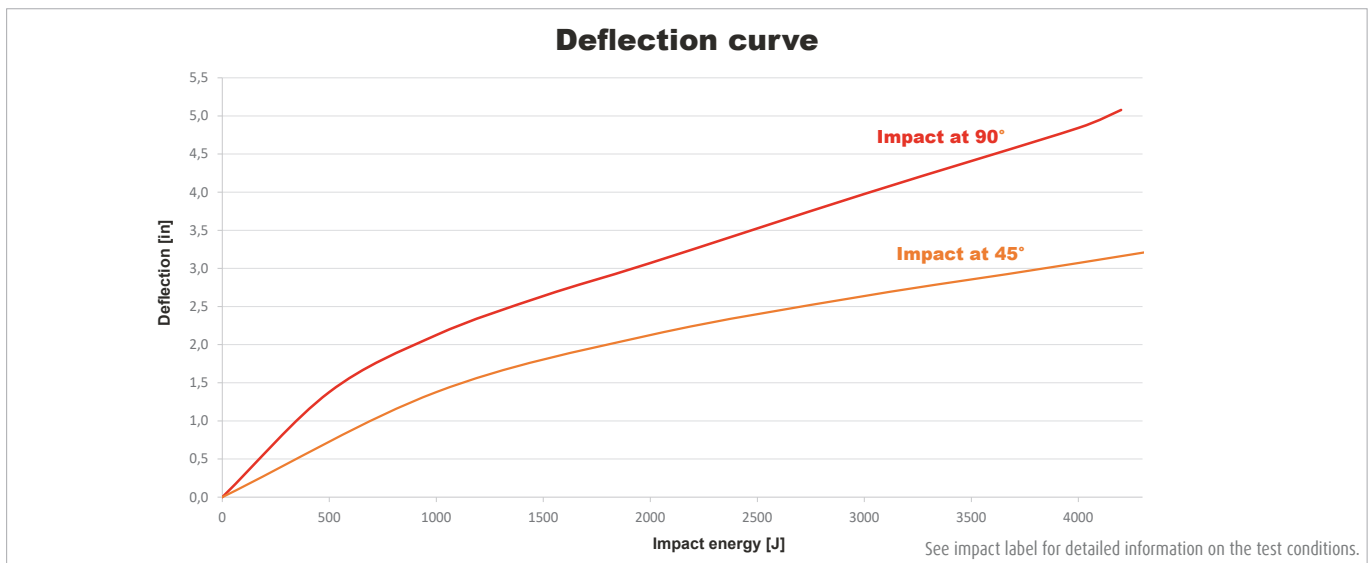
FEATURES AND FUNCTIONALITY - FLIP120L

 IMPACT LABEL FOR SAFETY BARRIERS		
BOPLAN FLIP120L 		
IMPACT RATING	45°	90°
E50 > 50 kJ		
E40 > 40 kJ		
E30 > 30 kJ		
E25 > 25 kJ		
E20 > 20 kJ		
E15 > 15 kJ		
E12 > 12 kJ		
E10 > 10 kJ		
E7 > 7.5 kJ		
E5 > 5.0 kJ	5.3 kJ	4.2 kJ
E2 > 2.5 kJ		
E1 > 1.0 kJ		
IMPACT RESULTS Deflection:  D = 129 mm / 7.5 inch At maximum impact energy	SUCCESS CRITERIA VEHICLE STOPPED ASI (ACCELERATION SEVERITY INDEX) < 0.5	
TEST CONDITIONS TEMPERATURE: 20°C / 68°F IMPACT HEIGHT: 88 mm / 3.46 inch → D: 129 mm / 7.5 inch TEST FLOOR: CONCRETE SLAB C25/30 - 150 mm / 6 inch	BOPLAN TEST CENTRE Muizelstraat 12 8560 Moorseele Belgium 	
TEST VEHICLE: TYPE: BOPLAN IMPACT TEST VEHICLE WEIGHT: 3775 Kg / 8322.45 lbs SIZE (L x W x H): 3100 x 1100 x 1150 mm / 122 x 43 1/4 x 45 1/4 inch CONTACT AREA, STEEL BUMPER WIDTH: 1000 mm / 39 1/4 inch	IL-PL121-20240711	

SIZE	
Height	4 3/4 in
Profile section (in)	4 3/4 (h) x 4 3/4 (w) x 2/5 (thick)
Standard rail length	24 / 36 / 48 / 60 / 72 in

REQUIREMENTS	
Concrete quality	minimum 4000PSI (C25/30)
Concrete floor plate thickness	minimum 6 in
Operational temperature	14°F up to 104°F
Water and humidity	Zinc coated fixations: indoor and outdoor use in most environments

REFERENCE LIST - FLIP120L		
	YELLOW/Black	BLACK/Yellow
24 in (2fix)	PL1210-0610-0001YB	PL1210-0610-0001BY
36 in (2fix)	PL1210-0915-0001YB	PL1210-0915-0001BY
48 in (3fix)	PL1210-1220-0001YB	PL1210-1220-0001BY
60 in (3fix)	PL1210-1525-0001YB	PL1210-1525-0001BY
72 in (3fix)	PL1210-1828-0001YB	PL1210-1828-0001BY
78 in (3fix)	PL1210-1980-0001YB	PL1210-1980-0001BY
120 in (4fix)	PL1210-3048-0001YB	PL1210-3048-0001BY



TECHNICAL DRAWING - FLIP120L
