



**READY
FOR
IMPACT**



**THE STRONGEST
POLYMER BOLLARD
IN THE WORLD**

**PROTECTIVE BOLLARD THAT SETS NEW
STANDARDS IN SAFETY, STRENGTH
AND PERFORMANCE**

THE STRONGEST POLYMER BOLLARD IN THE WORLD



FLEX IMPACT® BOLLARDS PUSH BOUNDARIES IN TERMS OF SAFETY, STRENGTH, AND PERFORMANCE

The range of Boplan® bollards is designed to meet a variety of needs. Each bollard in this series has a specific strength and impact resistance. These range from extremely heavy impacts of 24.1 kJ to lighter impacts of 2.5 kJ. This ensures an ideal safety solution for every situation. With a wide range of options, colors, and heights, the bollards are easy to adapt to specific environments and aesthetic preferences. The patented modular design offers unparalleled protection against collisions. The bollards are made from Extrilene, a high-quality polymer capable of withstanding repeated impacts. The bollard flexes with each collision, but returns to its original shape once the vehicle has passed.



For temperatures down to -22°F



BOPLAN® BOLLARDS
FIVE POWERFUL SAFETY SOLUTIONS



BO125L
>>> 2.5 kJ

BO170B
>>> 7.5 kJ

BO200R
>>> 10.2 kJ

BO200F
>>> 16 kJ

BO250T
>>> 24.1 kJ



THE REVOLUTIONARY BASE DEFENDER

The Base Defender protects the screws securing the round base plate to the floor. This durable elastomer cover makes it physically impossible to damage the screws by driving over the base plate. The Base Defender is wider than the bollard. This creates a free space and prevents fingers from crushing.

For a more finished look, you can cover the Base Defender with an optional Base Shield. It provides additional protection against ground-level impacts and keeps dirt and dust away.





TUVNORD
 TÜV NORD Systems GmbH & Co. KG
Determination of the Product Type
 Voluntary Certification acc. TÜV NORD Standard STH-ZE-KSP-VA-320
 Testing Criteria to determine essential Product Properties of Collision Protection Systems:
 PAS 13, Abs. 7 (Methods of testing the force of impact)
 tuev-nord.com

TUVNORD
 TÜV NORD Systems GmbH & Co. KG
Determination of the Product Type
 Voluntary Certification acc. to TÜV NORD Standard STH-ZE-KSP-VA-320
 Testing Criteria to determine essential Product Properties of Collision Protection Systems:
 UNI-TS 11886-1 2022.10 Impact protection in industry – Part 1: Test methods and criteria for classification
 tuev-nord.com

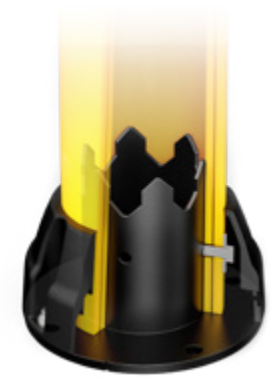


Why is the Boplan® bollard so strong?

This new series of bollards is the result of years of research, development, extensive testing, and practical experience. A unique combination of three features ensures the bollards' exceptional strength:



1. Extrilene: this polymer was specifically developed for enhanced impact resistance by Boplan®. A molecularly aligned material structure ensures exceptional strength while maintaining maximum flexibility.



2. The different tubes ensure optimal impact absorption through deformation and friction.

3. The optimized base plate covers a larger surface area and offers increased flexibility.

✓ PATENTED

NEED MORE FLEXIBILITY?

OPT FOR A REMOVABLE BASE PLATE

Sometimes in industrial environments, you need to remove a bollard temporarily. For such situations, Boplan has developed a mounting system that allows the BO200R to be easily removed and then resecured without causing damage to your floor.

You can continue to rely on its familiar protection with a 10.2 kJ impact value, while benefitting from maximum flexibility when the occasion demands it.



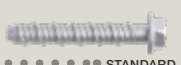

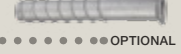
MAXIMUM VISIBILITY

All bollards are available in various distinctive colours and patterns, making them highly visible in any situation.

- Yellow or black (standard)
- Grey or red (available for BO200F & BO200R)
- Choose up to 3 stripes (black, white or yellow)



FASTENERS

- Concrete screws  STANDARD
- Expansion screws  OPTIONAL
- Asphalt screws  OPTIONAL

APPLICATIONS AND TYPICAL ENVIRONMENTS

For the protection of gates, entrances, corners, and machines in:

- Car parks
- Commercial properties
- Distribution centers
- Industrial properties
- Logistics, supply chain, and material handling
- Petrochemical and chemical plants
- Transport & logistics centers
- Warehouses and storage facilities

ADVANTAGES

- Quick and easy installation
- Resistance to chemicals and UV radiation
- Corrosion resistant
- Minimal maintenance required
- No paint or coating required
- Protected base plate fasteners
- Safe for fingers
- Impact resistant up to 24.1 kJ
- Tested according to the latest impact standard UNI/TS 11886-1
- 100% sustainable: easy to recycle
- A customized solution for every scenario
- Choice of options, colors, and heights
- Extrilene: high-quality polymer
- Patented technology



FLEX IMPACT® BOLLARDS

BO BELT 10.2 kJ

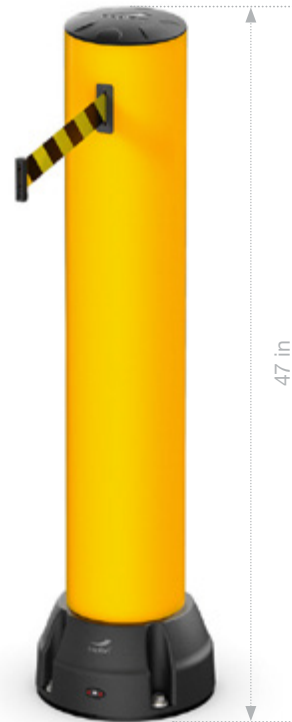


BOLLARD WITH INTEGRATED BELT BARRIER

BO BELT is a FLEX IMPACT® BO200R bollard with an integrated, easy-to-use belt barrier system. BO BELT not only provides effective protection against collisions, but also allows you to quickly close off areas using a 5-meter integrated belt. This prevents pedestrians from walking into the path of moving vehicles, stepping into uncovered openings, or entering areas under maintenance.

Key features

- Optimized base plate with crown structure
- Includes a Base Defender to protect screws and base plate
- Compatible with other Boplan safety products

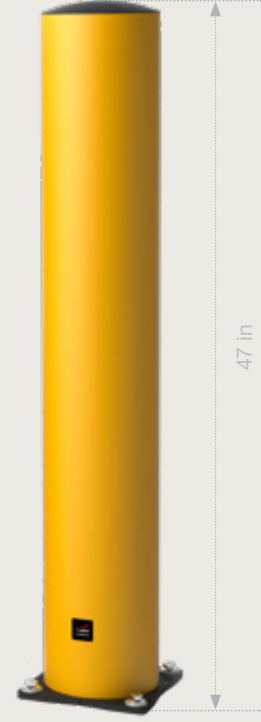


BO SMART 3 kJ



THE SMART BOLLARD THAT MONITORS CRITICAL AREAS 24/7

The FLEX IMPACT® **BO SMART** bollard monitors and protects your most vulnerable infrastructure 24/7. After each collision, the Hub sends a real-time notification. Connect up to 50 smart bollards to one Hub via wireless connection. BO SMART helps you gather valuable insights about protected areas, collision history, frequency, and impact. This prompts inspections and helps determine whether your protection needs replacement or upgrading.

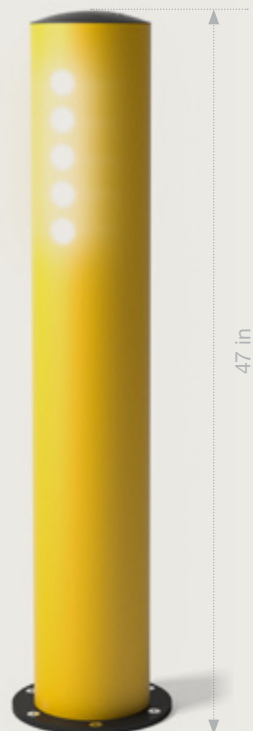


BO LED 3 kJ



BOLLARD FOR POORLY LIT AREAS AND LOADING DOCKS

The FLEX IMPACT® **BO LED** bollard features 5 switch-operated LED lights. BO LED is ideal for areas where goods must be loaded or unloaded in low-light conditions. You choose the direction of the light when installing the bollard. Perfect for illuminating the inside of a trailer during loading and unloading at a loading dock.



SIGNMARK 150 & SIGNMARK 200

With the **SIGNMARK**, you can easily communicate information in the workplace where it is most relevant and visible. **SIGNMARK 150** mounts onto any safety product with a Ø 125 mm up to Ø 170 mm section, while **SIGNMARK 200** fits any Ø 200 mm bollard tube or height restrictor.



ADVANTAGES

- **Flexibility:** fits perfectly and can be replaced with a simple click
- **Attractive:** soft rubber-like material and no visible screws
- **Easy to install:** click, screw or glue the black cover panel onto the holder

THE RIGHT MESSAGE IN THE RIGHT PLACE



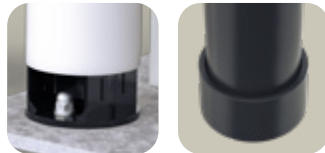
BOLLARD FOR CHARGING STATIONS



BOLLARD DESIGNED TO PROTECT CHARGING STATIONS FROM COLLISIONS

BO125L EV

- Diameter: 5 in
- Secured to concrete base with 2 screws



- No visible fasteners: concealed by black collar (standard)

Light impact: < 0.5 kJ

BO145L EV

- Diameter: 6 in
- No visible fasteners: mounted in concrete with a rubber collar



- The hole for the bollard is created when the concrete is poured (precast or on-site) or drilled afterward (6 in diameter; 10 in deep). A collar at ground level seals the gap between the base and the bollard.

Impact: < 2 kJ



WHAT ABOUT LIABILITY?

Many countries have specific regulations and safety standards for charging infrastructure. If charging stations are not properly secured, this can entail legal liability in the event of an accident. Therefore, it is essential to take preventive measures to secure charging stations and comply with regulations. This reduces legal risks and demonstrates a commitment to safety.

FORGET STEEL

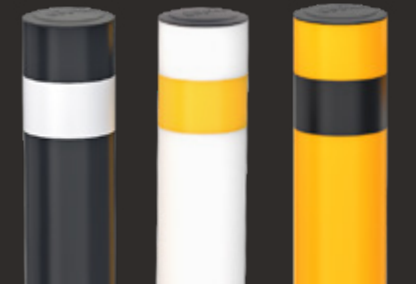
The polymer bollards' flexibility enables them to absorb impacts, protecting the charging station. After a collision, they return to their original shape. A steel bollard, however, may be damaged and require replacement after just one collision. Furthermore, a steel bollard can cause additional damage. Not only to the ground to which it is secured but also to the vehicle itself. To avoid issues with vehicle owners, choose a polymer bollard.



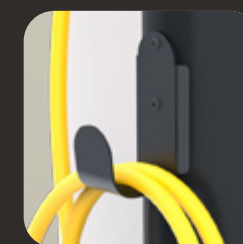
MAXIMUM VISIBILITY

BO125L EV and BO145L EV bollards are available in several distinctive colors, making them highly visible in any situation.

- Available colors: yellow, black, and white
- To make the bollards stand out even more, a reflective yellow, white, or black stripe can be added.



OPTIONAL ACCESSORIES



Cable hook

Users can hang up their charging cable on a hook, preventing the cable from getting dirty or damp.



SignMark 150

BO125L EV and BO145L EV can be equipped with a SignMark warning sign with a 6 inch diameter.

ADVANTAGES

- Prevents damage to the vehicle
- UV resistance
- Long lifespan
- Finished look: concealed fasteners
- Maximum visibility
- Easy installation
- Various options and versions
- Low maintenance
- Returns to original shape after a collision

BOPLAN HEADQUARTERS

Muizelstraat 12
8560 Moorsele, Belgium
+32 56 20 64 20
info@boplan.com

BOPLAN USA

4350 W. White Road, St 300
Flowery Branch, GA 30542
+1 678-890-5906
info@boplan.us

BOPLAN UK

Science Centre, Wolverhampton Science Park
Glaisher Drive, Wolverhampton WV10 9RU
+44 1902 82 4280
info@boplan.co.uk

BOPLAN DEUTSCHLAND

IHP-Nord · Babenhäuser Str. 50
63762 Großostheim
+49 6026 999 51 90
info@boplan.de

BOPLAN FRANCE

617, Avenue de Bayonne
64210 Bidart
+33 (0)5 35 45 75 35
info@boplan.fr

BOPLAN ESPAÑA

Carrer d'Aragó 208, 2o 6a
08002 Barcelona
+34 936 81 66 88
info@boplan.es

BOPLAN NEDERLAND

Toermalijnring 100
3316 LC Dordrecht
+31 85 13 07 500
info@boplan.nl

BOPLAN POLSKA

Ul. Graniczna 34B / U16
41-300 Dąbrowa Górnicza
+48 32 224 74 85
info@boplan.pl

BOPLAN ITALIA

Via Privata Maria Teresa 7
20123 Milano
+39 02 81287168
info@boplan.it

BOPLAN JAPAN

4F Matsuoka II Building,
1-2-11 Nijyooji Minami
Nara City, Nara 630-8012
+81 (0)742-93-8705
info@boplan.co.jp

FOLLOW US



BOPLAN.COM

For more information about our products,
services, and worldwide network

