

FLIP200F

KICK RAILS AND WHEEL STOPS

Revision: 12 February 2025 4:11 PM
Boplan reference: PL2020...

PRODUCT SPECIFICATIONS

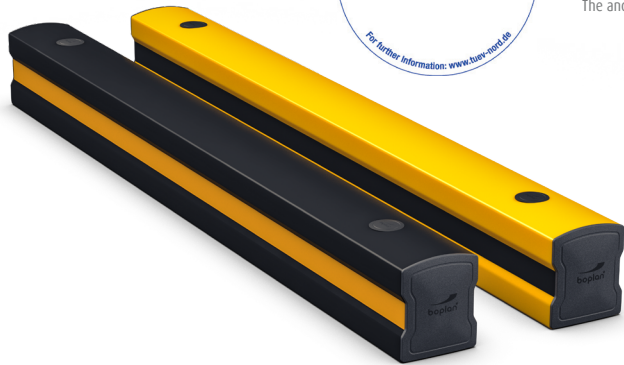
APPLICATION	
Environment	Ground level protection - Wall protection (refrigerator walls, decorative walls, sandwich panels) - Wheel guide for pallet trucks or trolleys in busy traffic lanes - Protection of machines and infrastructure - Below a Boplan traffic barrier system - Indoor and outdoor use - Food Industry
MATERIAL	
Plinth	Extrilene® - UV resistant - Fire class E ⁺ - Non conductive - Impervious to most chemicals**
Endcap	Sustainable elastomer
STANDARD COLOURS	
Plinth	Yellow/Black - Black/Yellow (Yellow RAL 1003 & Black RAL 9005)

*Classification according to EN 13501-1:2007 +A1:2009 - Fire classification of construction products and building elements.
**Ask your local sales office for resistance to specific chemicals.



		FIXATIONS		
			ZC (Zinc coated)	SS (Stainless steel)
STANDARD	Concrete screw		Ø17mm x 130mm	Not available
ALTERNATIVE	Wedge Anchor		Ø18 (M12) x 130mm	Not available

The anchors specified in this document are metric. Imperial anchors are available on demand.



FEATURES AND FUNCTIONALITY - FLIP200F

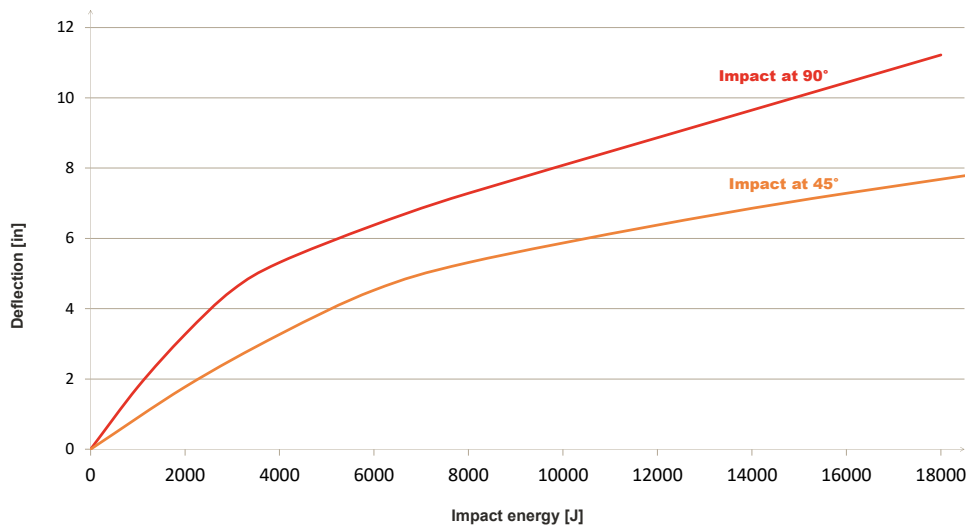
BOPLAN FLIP200F		
IMPACT RATING	45°	90°
E50 < 50 kJ		
E40 < 40 kJ		
E30 < 30 kJ		
E25 < 25 kJ		
E20 < 20 kJ	22 kJ	17 kJ
E15 < 15 kJ		
E12 < 12 kJ		
E10 < 10 kJ		
E7 < 7.5 kJ		
E5 < 5.0 kJ		
E2 < 2.5 kJ		
E1 < 1.0 kJ		

IMPACT RESULTS Deflection at 90°: 285 mm / 11.22 Inch At maximum impact energy		SUCCESS CRITERIA VEHICLE STOPPED ASI (ACCELERATION SEVERITY INDEX) < 0.5
TEST CONDITIONS TEMPERATURE: 20°C / 68°F IMPACT HEIGHT: 88 mm / 3.46 Inch → D: 285 mm / 11.22 Inch TEST FLOOR: CONCRETE SLAB C25/30 - 150 mm / 6 Inch FIXATION: CONCRETE SCREW Ø17 x 135 mm	BOPLAN TEST CENTRE Muizelstraat 12 8560 Moorsele Belgium 	Approved by: TÜV NORD Systems PAS 13:2017 compliant
TEST VEHICLE: TYPE: BOPLAN IMPACT TEST VEHICLE WEIGHT: 3869 Kg / 8529.68 lbs SIZE (L x W x H): 3100 x 1100 x 1150 mm / 122 x 43.3 x 45.3 Inch CONTACT AREA, STEEL BUMPER WIDTH: 1000 mm / 39.4 Inch	IL-FLIP200F-20230319	

REQUIREMENTS	
Concrete quality	minimum 4000PSI (C25/30)
Concrete floor plate thickness	minimum 6 in
Operational temperature	14°F up to 104°F
Water and humidity	Zinc coated fixations: indoor and outdoor use in most environments

SIZE	
Height	8 in
Profile section	8 in (h) x 6 4/5 in (w) x (2/5 in thick)
Standard rail length	24 / 36 / 48 / 60 / 72 / 78 / 120 in

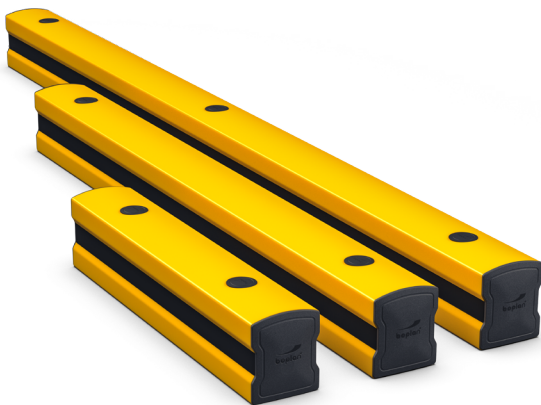
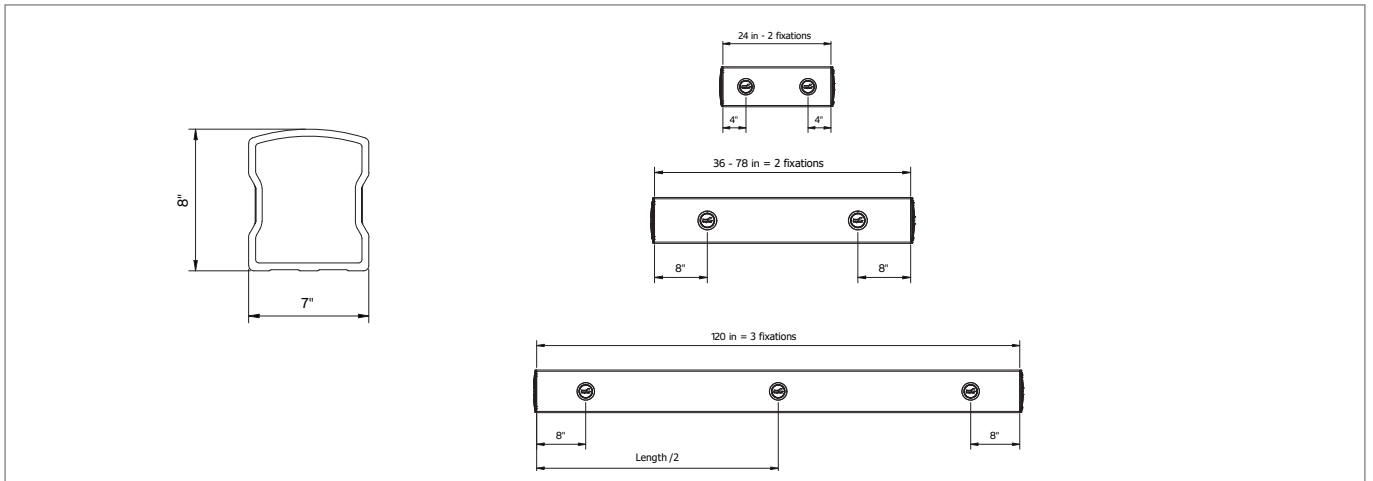
Deflection curve



See impact label for detailed information on the test conditions.

REFERENCE LIST - FLIP200F

	YELLOW/black	BLACK/Yellow
24 in (2fix)	PL2020-0610-0002YB	PL2020-0610-0002BY
36 in (2fix)	PL2020-0915-0002YB	PL2020-0915-0002BY
48 in (2fix)	PL2020-1220-0002YB	PL2020-1220-0002BY
60 in (2fix)	PL2020-1525-0002YB	PL2020-1525-0002BY
72 in (2fix)	PL2020-1828-0002YB	PL2020-1828-0002BY
78 in (2fix)	PL2020-1980-0002YB	PL2020-1980-0002BY
120 in (3fix)	PL2020-3048-0002YB	PL2020-3048-0002YB



80 <<< SPECSHEET

Boplan USA INC | 4350 W White Road, Suite 300, Flowery Branch, GA | +1 678 890 5906 | sales@boplan.us | www.boplan.com

DISCLAIMER: ALL PRODUCT SPECIFICATIONS AND DATA ARE SUBJECT TO CHANGE WITHOUT NOTICE TO IMPROVE RELIABILITY, FUNCTION OR DESIGN OR OTHERWISE.
 © Boplan, the Boplan logo, Flex Impact, Extrilene, Ice Flex, Teddy Pro and RackBull are trademarks of Boplan bv. All other trademarks are property of their respective owners.

FEATURES AND FUNCTIONALITY - FLIP200F - TB BASE SPACER

APPLICATION

Environment	The TB Base Spacers are specifically designed to fit underneath the end-and mid-posts of the TB400 series. By raising the baseplates, it creates additional space beneath the tube, allowing you to seamlessly integrate the FLIP200F, expanding the device's functionality.
Compatibility	TB400 - series

REFERENCE LIST

PL0099-0180-0180BLPE	TB Base Spacer - TB400 MP - 7.1x7.1 inch - Black - HDPE
PL0099-0275-0275BLPE	TB Base Spacer - TB400 EP - 10.8x10.8 inch - Black - HDPE
PL0099-0300-0220BLPE	TB Base Spacer - TB400 MP - 11.8x8.7 inch - Black - HDPE
PL0099-0320-0275BLPE	TB Base Spacer - TB400 EP - 9.1x12.6 inch - Black - HDPE

