



**READY  
FOR  
IMPACT**



# **KICK RAILS**

**GROUND-LEVEL PROTECTION**



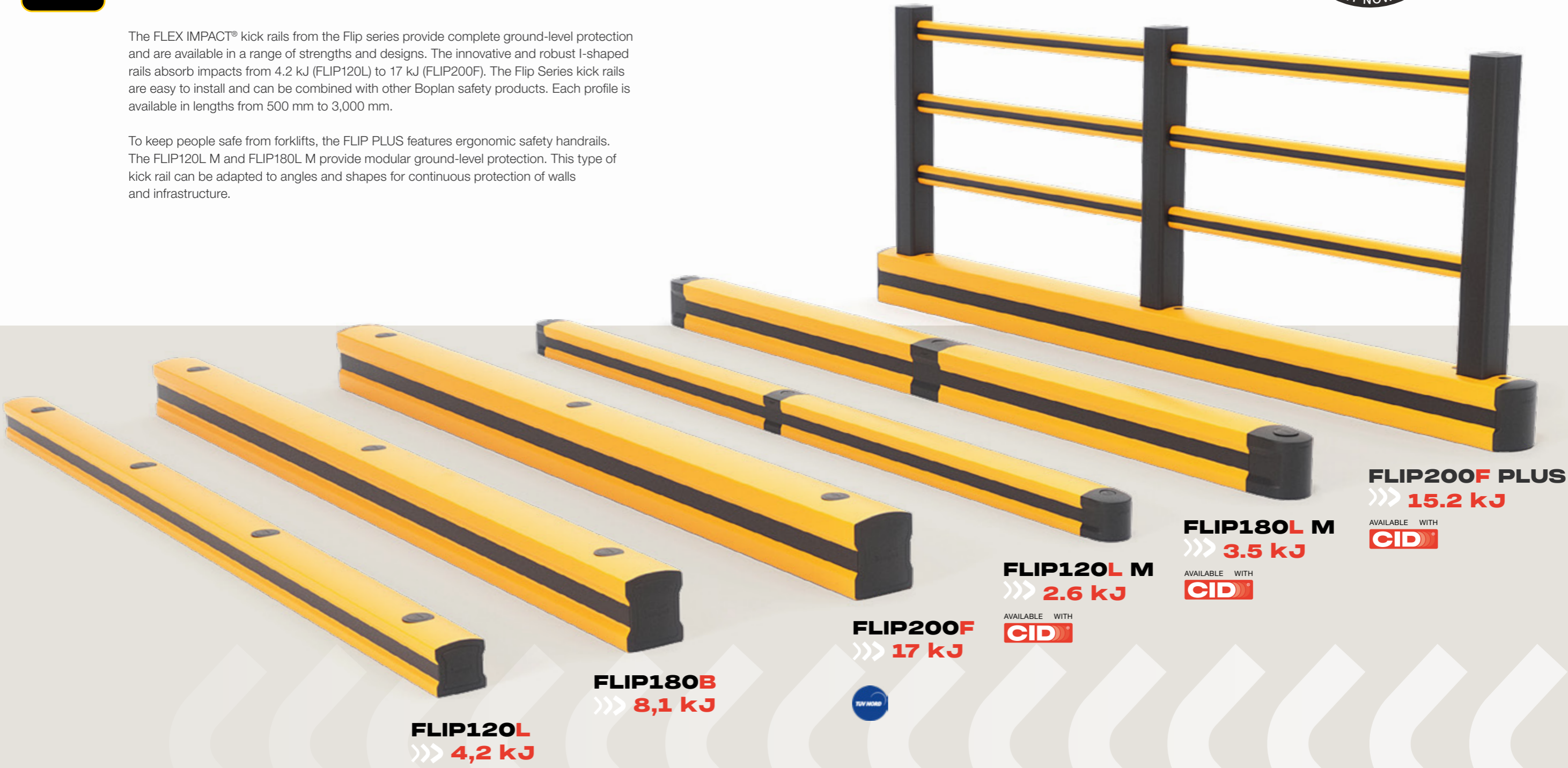
# KICK RAILS



## GROUND-LEVEL PROTECTION

The FLEX IMPACT® kick rails from the Flip series provide complete ground-level protection and are available in a range of strengths and designs. The innovative and robust I-shaped rails absorb impacts from 4.2 kJ (FLIP120L) to 17 kJ (FLIP200F). The Flip Series kick rails are easy to install and can be combined with other Boplan safety products. Each profile is available in lengths from 500 mm to 3,000 mm.

To keep people safe from forklifts, the FLIP PLUS features ergonomic safety handrails. The FLIP120L M and FLIP180L M provide modular ground-level protection. This type of kick rail can be adapted to angles and shapes for continuous protection of walls and infrastructure.



**FLIP120L**  
 >>> 4,2 kJ

**FLIP180B**  
 >>> 8,1 kJ

**FLIP200F**  
 >>> 17 kJ



**FLIP120L M**  
 >>> 2.6 kJ

AVAILABLE WITH  
**CID**

**FLIP180L M**  
 >>> 3.5 kJ

AVAILABLE WITH  
**CID**

**FLIP200F PLUS**  
 >>> 15.2 kJ

AVAILABLE WITH  
**CID**

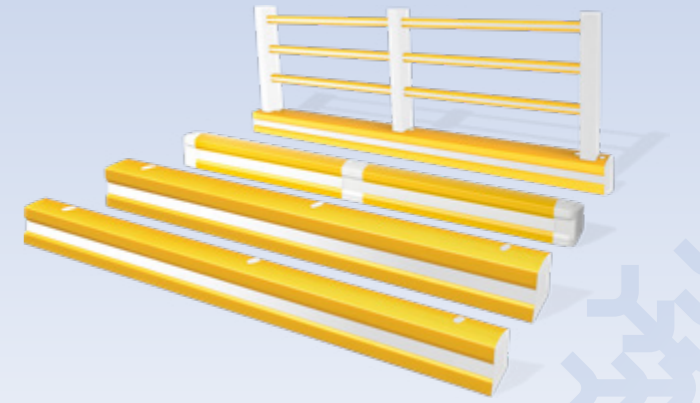
**PROTECTION AGAINST  
 IMPACTS UP TO  
 >>> 17 kJ**



WITH BOPLAN'S PATENTED CID® SYSTEM, YOU CAN IMMEDIATELY IDENTIFY WHERE YOUR SAFETY PRODUCT SUFFERED A HEAVY IMPACT. SEE PAGE 9 FOR MORE INFORMATION.



The FLIP180B, FLIP200F, FLIP180L M and FLIP200F PLUS kick rails are also available in a version designed for use in temperatures as low as -30°C.



## KEY FEATURES AND BENEFITS



### IMPACT-RESISTANT AND FLEXIBLE

Our products are made from EXTRILENE®, a high-quality polymer. This material is ideal for absorbing heavy impacts.



### LOW MAINTENANCE

FLEX IMPACT® kick rails require little to no maintenance. With proper use, our systems last a very long time.



### RESISTANT TO CHEMICALS AND UV RADIATION

Our weather-resistant kick rails are resistant to chemicals and do not rust. They are perfect for environments where chemicals are frequently used or where strict hygiene standards apply. Bacteria do not adhere to the polymer and it is easy to clean.



### FOR INDOOR AND OUTDOOR USE



### QUICK AND EASY INSTALLATION



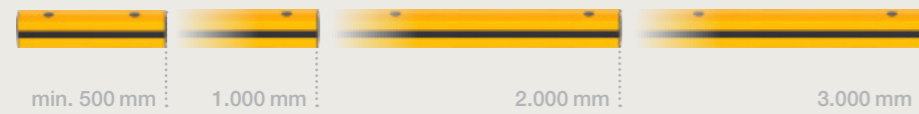
### OPTIMAL VISIBILITY

## USE THE FLIP KICK RAILS FOR:

- Ground-level impact protection
- Protection of fragile walls such as refrigerator walls, decorative walls and sandwich panels
- Protection of machinery, equipment and infrastructure
- Cost-effective rack protection
- Wheel guide for pallet trucks and goods wagons in aisles



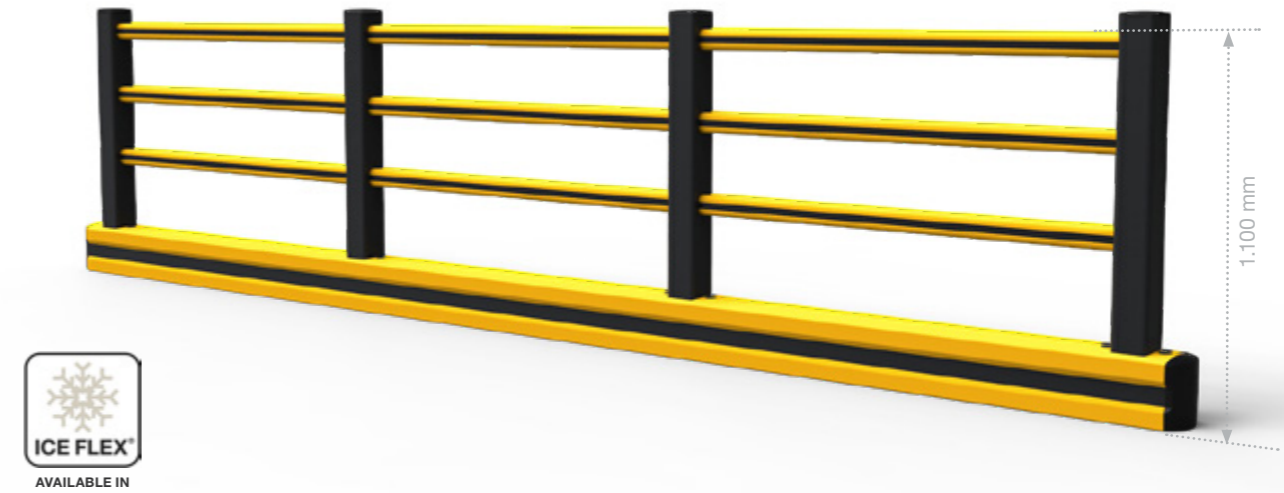
**KICK RAILS TO PROVIDE GROUND-LEVEL PROTECTION**



**COMBINE THE FLIP200F KICK RAIL WITH TB 400 SAFETY BARRIERS**



**KICK RAILS TO GUIDE PEDESTRIANS AND PROVIDE GROUND-LEVEL PROTECTION**



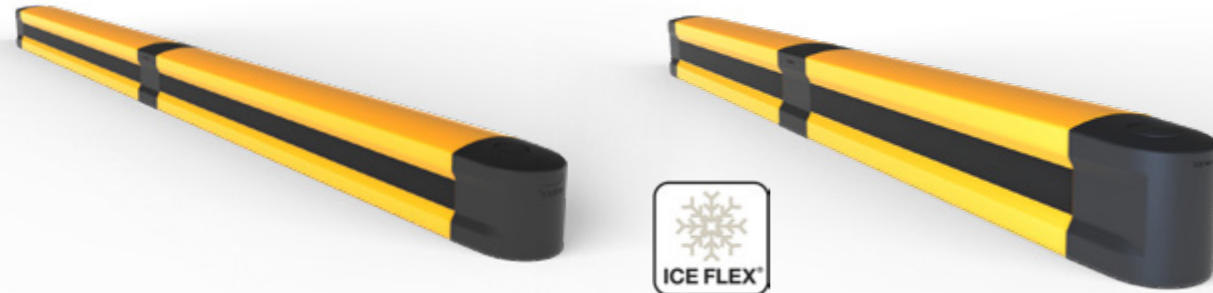
**FLIP200F PLUS**  
 >>> 15,2 kJ



**FLEX IMPACT® KICK RAILS**

**MODULAR KICK RAILS**

Our modular kick rails adapt to the contours and angles of walls, machines and infrastructure. This ensures seamless protection. End pieces, middle pieces, universal angle pieces and 90° corner pieces enable modular configuration according to your business's needs.



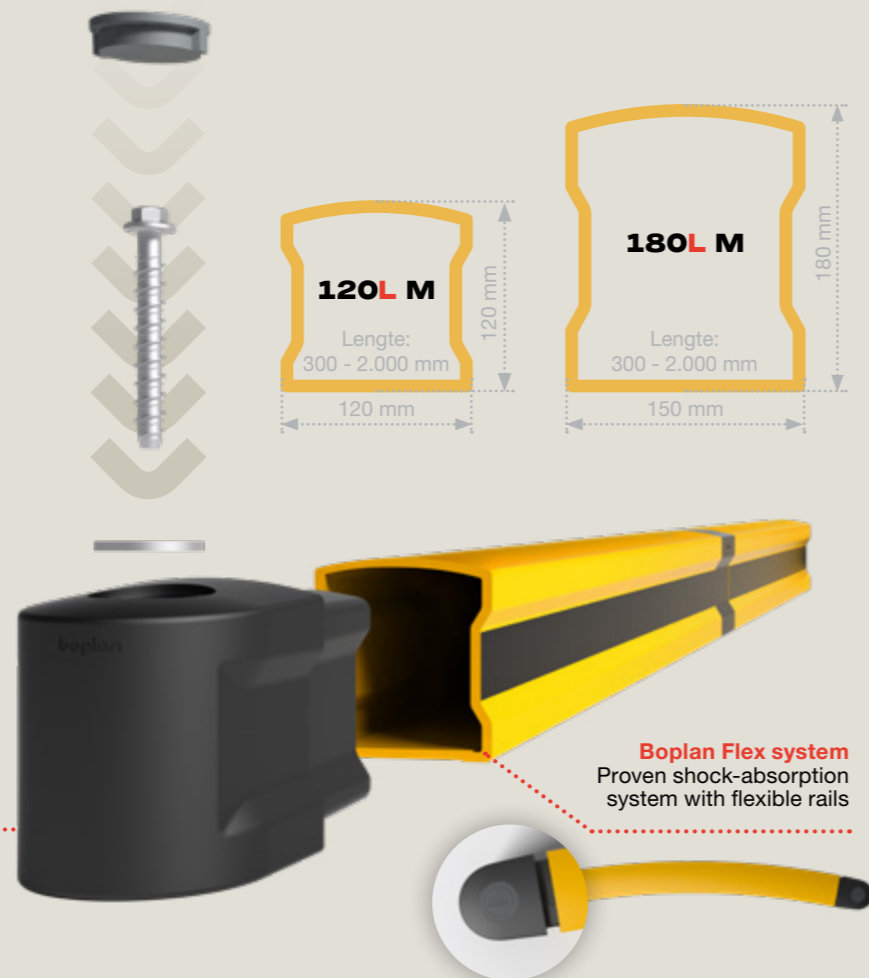
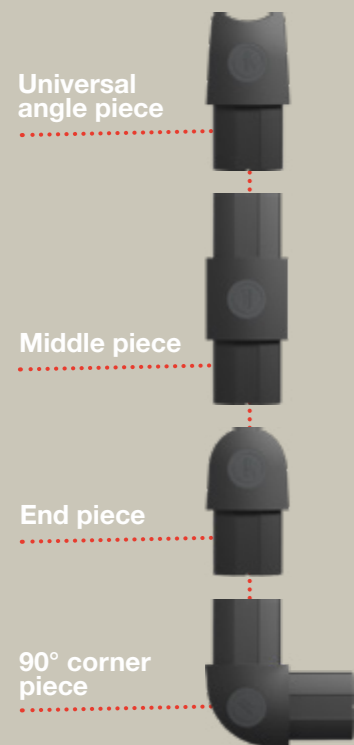
**FLIP120L M**  
 >>> 2,6 kJ



**FLIP180L M**  
 >>> 3,5 kJ



**IMPACT-RESISTANT CONNECTORS**



**Boplan Flex system**  
 Proven shock-absorption system with flexible rails

**CID® CRITICAL IMPACT DETECTOR**

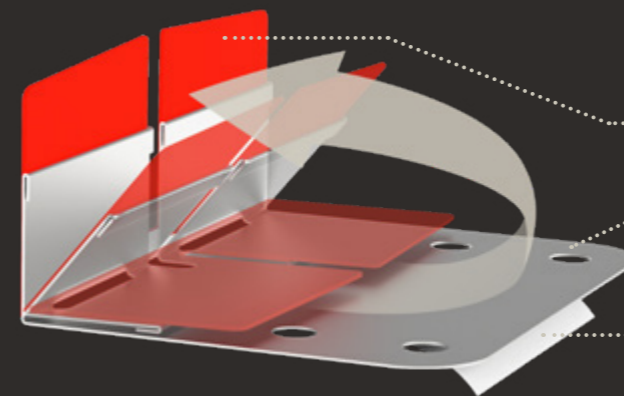
**QUICKLY IDENTIFY WHERE A SIGNIFICANT COLLISION HAS OCCURRED AND TECHNICAL INSPECTION OF YOUR KICK RAILS IS REQUIRED**

Although safety equipment often appears undamaged from the outside, an impact may have caused serious issues regarding the functional integrity, which – without CID® – can only be detected through a technical inspection.

The red CID® label only appears after such critical collisions, warning you of potential danger zones where safety might be compromised.

Additionally, CID® allows you to easily pinpoint areas in the workplace that experience frequent heavy shocks, indicating where extra protective and preventive measures are needed.

This safety optimisation could involve reevaluating the traffic plan, adjusting the workplace layout, adding more signage, raising awareness and responsibility among forklift drivers, installing heavier safety solutions, etc.



**Impact indicators**  
 Red plastic tabs become visible after a critical impact

**Spring**  
 Stainless steel base

**Double-sided tape**

**BEFORE IMPACT**



**DURING IMPACT**



**AFTER CRITICAL IMPACT**



**WITH BOPLAN'S PATENTED CID® SYSTEM, YOU CAN IMMEDIATELY IDENTIFY WHERE YOUR SAFETY PRODUCT SUFFERED A HEAVY IMPACT**



**READY  
FOR  
IMPACT**

### **BOPLAN HQ**

Muizelstraat 12  
8560 Moorsele, Belgium  
+32 56 20 64 20  
info@boplan.com

### **BOPLAN UK**

Science Centre, Wolverhampton Science Park  
Glaisher Drive, Wolverhampton WV10 9RU  
+44 1902 82 4280  
info@boplan.co.uk

### **BOPLAN USA**

4350 W. White Road, St 300  
Flowery Branch, GA 30542  
+1 678-890-5906  
info@boplan.us

### **BOPLAN DEUTSCHLAND**

IHP-Nord · Babenhäuser Str. 50  
63762 Großostheim  
+49 6026 999 51 90  
info@boplan.de

### **BOPLAN FRANCE**

617, Avenue de Bayonne  
64210 Bidart  
+33 (0)5 35 45 75 35  
info@boplan.fr

### **BOPLAN ESPAÑA**

Carrer d'Aragó 208, 2o 6a  
08002 Barcelona  
+34 936 81 66 88  
info@boplan.es

### **BOPLAN NEDERLAND**

Toermalijnring 100  
3316 LC Dordrecht  
+31 85 13 07 500  
info@boplan.nl

### **BOPLAN POLSKA**

Ul. Graniczna 34B / U16  
41-300 Dąbrowa Górnicza  
+48 32 224 74 85  
info@boplan.pl

### **BOPLAN ITALIA**

Via Privata Maria Teresa 7  
20123 Milano  
+39 02 81287168  
info@boplan.it

### **BOPLAN JAPAN**

4F Matsuoka II Building,  
1-2-11 Nijyooji Minami  
Nara City, Nara 630-8012  
+81 (0)742-93-8705  
info@boplan.co.jp

### **FOLLOW US**



### **BOPLAN.COM**

For more information about our products,  
services and worldwide network

