

TB 260 PLUS FENCE

SAFETY BARRIERS

Revision: 29 January 2026 9:33 AM
Boplan reference: TF2600-...



PRODUCT SPECIFICATIONS

APPLICATION

Environment	TB 260 Plus Fence provides an effective low to the ground crash protection with machine guard fencing. The low centre of gravity prevents goods or pallets sliding under the barrier.
Impact performance at 90°	POST: 12000 Joule (Eq. to 5ton - 7.9 km/h)
	RAIL: 21200 Joule (Eq. to 5ton - 10.5 km/h)

MATERIAL

Posts	Extrilene® - UV resistant - Fire class E ⁺ - Non conductive - Impervious to most chemicals ^{**}
Mesh	Glass fiber reinforced composite

STANDARD COLOURS

End post	Yellow RAL 1003
Mid post	Yellow RAL 1003
Impact tube	Yellow RAL 1003
Mesh	Black RAL 9005

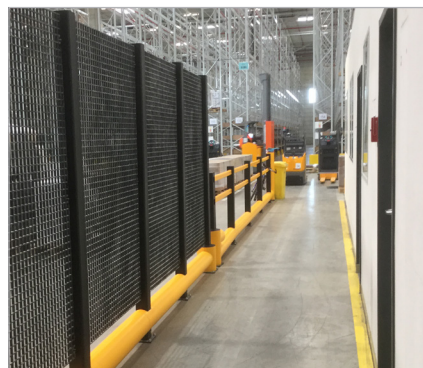
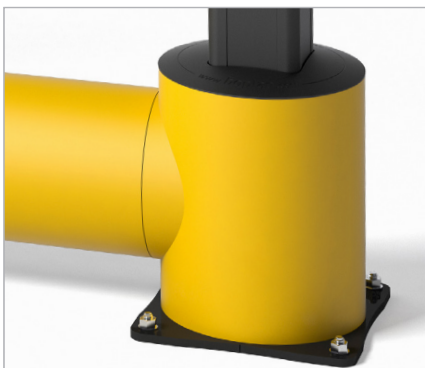
BASEPLATES

	Steel
Material	Steel 37
Coating	Lacquered
Colour	High gloss black

^{*}Classification according to EN 13501-1:2007 +A1:2009 - Fire classification of construction products and building elements.
^{**}Ask your local sales office for resistance to specific chemicals.

FIXATIONS

			ZC (Zinc coated)	SS (Stainless steel)
STANDARD	Wedge anchor		M12 x 110mm	Not available
	Anchor rod (Chemical)		M12 x 120mm + Chemical resin	Not available
ALTERNATIVES	Spit anchor		Bolt M12 x 100mm + Plug Ø20mm	Not available






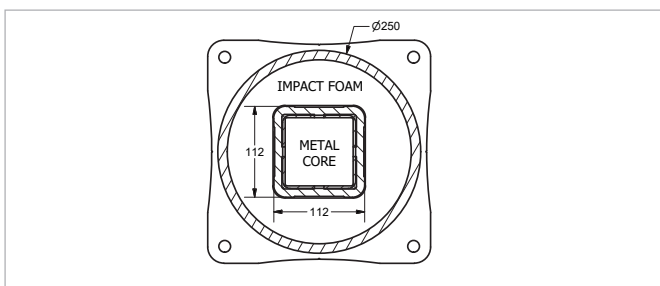
FEATURES AND FUNCTIONALITY - TB 260 PLUS FENCE

SIZE	
Height end posts	2300 mm
Height mid post	2300 mm
Profile section tubes	Ø200 mm (11 mm thick)
Mesh	1220 mm x 1800 mm (13mm thick) Mesh inner dimension 33 mm x 33 mm
Profile section end posts	Outer tube: Ø250 mm (11 mm thick) Inner profile: 112 mm x 112 mm (10 mm thick)
Profile section mid posts	Profile: 112 mm x 112 mm (10 mm thick)
Standard rail length	1350 mm (center - center dimension) Other sizes: 850 mm - 1349 mm (center - center dimension)
Baseplate	End Post: 275 mm x 275 mm x (10 mm thick) Mid Post: 180 mm x 180 mm x (10 mm thick)

REQUIREMENTS	
Concrete quality	minimum C25/30
Concrete floor plate thickness (mm)	minimum 150 mm
Concrete slab dimension around posts (mm)	600 (h) x 600 (w) x 300 (d)
Operational temperature	-10°C up to +40°C
Water and humidity	Steel (standard): dry indoor use only.

COMPLIANCE MESH	
Machine directive	The narrow mesh size allows a close safety distance of 200mm towards the danger. (According machine directive 2006/42/EC)
Static point load of mesh	Static point load of 450 N gives a maximum deflection of 15.7 mm.

 IMPACT LABEL FOR SAFETY BARRIERS		
BOPLAN TB 260 PLUS FENCE		
IMPACT RATING	45°	90°
E80 < 80 kJ		
E60 < 60 kJ		
E50 < 50 kJ		
E40 < 40 kJ		
E35 < 35 kJ	30,0 kJ	
E30 < 30 kJ		
E25 < 25 kJ		21,2 kJ
E20 < 20 kJ		
E15 < 15 kJ		
E10 < 10 kJ		
E5 < 5,0 kJ		
E2 < 2,5 kJ		
TEST CONDITIONS	TEST VEHICLE	ACCREDITED TEST LABORATORY
TEMPERATURE: 20°C / 68°F IMPACT HEIGHT: 160 mm / 6 1/4 Inch IMPACT ANGLE: 90° TEST FLOOR: CONCRETE SLAB C25/30 - 160 mm / 6 Inch MANUFACTURER ANCHOR PULL OUT: 7,9 kN	WEIGHT: 2300 KG / 5070.63 lbs TYPE: COMMERCIAL FORK LIFT SIZE (L x W x h): 1890x1020x1970 mm / 74x40x78 Inch CONTACT AREA: STEEL BUMPER WIDTH: 600 mm / 24 Inch	 620 Route des Fromentaux 01500 Saint-Maurice-de-Rémens 01360 Bèlignieux France
SUCCESS CRITERIA VEHICLE STOPPED - ASI (ACCELERATION SEVERITY INDEX) < 0.5		IL-TF260-20250103



REFERENCE LIST - TB 260 PLUS FENCE

POSTS		
End post - YE	TF2600-0001-EPYE	
End Corner post - YE - 90° - Up	TF2600-0001-CPUYE	
End Corner post - YE - 90° - Down	TF2600-0001-CPDYE	
Mid post - YE	TF2600-0001-MPYE	

CURVES		
Conn.tube Ø250mm - 90° Curve 350mm - YE	TF2600-0350-C259YE	

RAIL SETS			
	Tube length (A)	CC length (B)	REFERENCE
Standard rail	650 mm	900 mm	TF2600-0650-0900YE
Standard rail	800 mm	1050 mm	TF2600-0800-1050YE
Standard rail	950 mm	1200 mm	TF2600-0950-1200YE
Standard rail	1100 mm	1350 mm	TF2600-1100-1350YE

